



INTERNATIONAL APPLICATION PUBLISHED UNDER THE PATENT COOPERATION TREATY (PCT)

<p>(51) International Patent Classification 5 : C07K 15/28, C12N 5/12, 9/96 G01N 33/535, A61K 43/00, 39/00</p>	A1	<p>(11) International Publication Number: WO 91/00295 (43) International Publication Date: 10 January 1991 (10.01.91)</p>
<p>(21) International Application Number: PCT/US90/03712 (22) International Filing Date: 29 June 1990 (29.06.90) (30) Priority data: 374,947 30 June 1989 (30.06.89) US 544,246 26 June 1990 (26.06.90) US (71) Applicant: ONCOGEN LIMITED PARTNERSHIP [US/ US]; 3005 First Avenue, Seattle, WA 98121 (US). (72) Inventors: HELLSTROM, Ingegerd ; HELLSTROM, Kark, Erik ; 3925 N.E. Surber Drive, Seattle, WA 98105 (US). BRUCE, Kim, Folger ; 2433 36th West, Seattle, WA 98199 (US). SCHREIBER, George, J. ; 3832 172nd Avenue, N.E., Redmond, WA 98052 (US).</p>	<p>(74) Agents: MANDEL, SaraLynn et al.; Sheldon & Mak, 201 South Lake Avenue, Suite 800, Pasadena, CA 91101 (US). (81) Designated States: AT (European patent), AU, BE (Euro- pean patent), BF (OAPI patent), BJ (OAPI patent), CF (OAPI patent), CG (OAPI patent), CH (European pat- ent), CM (OAPI patent), DE (European patent)*, DK (European patent), ES (European patent), FI, FR (Euro- pean patent), GA (OAPI patent), GB (European patent), HU, IT (European patent), JP, KR, LU (European pat- ent), ML (OAPI patent), MR (OAPI patent), NL (Euro- pean patent), NO, SE (European patent), SN (OAPI pat- ent), SU, TD (OAPI patent), TG (OAPI patent). Published <i>With international search report. Before the expiration of the time limit for amending the claims and to be republished in the event of the receipt of amendments.</i></p>	
<p>(54) Title: NOVEL ANTIBODIES REACTIVE WITH HUMAN CARCINOMAS</p>		
<p>(57) Abstract</p> <p>The present invention relates to novel antibodies reactive with human carcinoma cells. More particularly, the antibodies of the invention include: a murine monoclonal antibody, BR96; a human/murine chimeric antibody, ChiBR96; and a F(ab')₂ fragment of BR96. These antibodies are reactive with a cell membrane antigen on the surface of human carcinomas. The antibodies display a high degree of selectivity for carcinoma cells and possess the ability to mediate ADCC and CDC activity. In addition, the antibodies of the invention internalize within the carcinoma cells to which they bind and are therefore particularly useful for therapeutic applications, for example, as the antibody component of antibody-drug or antibody-toxin conjugates. The antibodies also have a unique feature in that they are cytotoxic when used in the unmodified form, at specified concentrations.</p> <p style="text-align: right;">BEST AVAILABLE COPY</p>		

DESIGNATIONS OF "DE"

Until further notice, any designation of "DE" in any international application whose international filing date is prior to October 3, 1990, shall have effect in the territory of the Federal Republic of Germany with the exception of the territory of the former German Democratic Republic.

FOR THE PURPOSES OF INFORMATION ONLY

Codes used to identify States party to the PCT on the front pages of pamphlets publishing international applications under the PCT.

AT	Austria	ES	Spain	MC	Monaco
AU	Australia	FI	Finland	MG	Madagascar
BB	Barbados	FR	France	ML	Mali
BE	Belgium	GA	Gabon	MR	Mauritania
BF	Burkina Faso	GB	United Kingdom	MW	Malawi
BG	Bulgaria	GR	Greece	NL	Netherlands
BJ	Benin	HU	Hungary	NO	Norway
BR	Brazil	IT	Italy	RO	Romania
CA	Canada	JP	Japan	SD	Sudan
CF	Central African Republic	KP	Democratic People's Republic of Korea	SE	Sweden
CG	Congo	KR	Republic of Korea	SN	Senegal
CH	Switzerland	LI	Licchtenstein	SU	Soviet Union
CM	Cameroon	LK	Sri Lanka	TD	Chad
DE	Germany, Federal Republic of	LU	Luxembourg	TG	Togo
DK	Denmark			US	United States of America

NOVEL ANTIBODIES REACTIVE WITH HUMAN CARCINOMASTechnical Field of The Invention

The present invention relates to novel antibodies reactive with human carcinoma cells. More particularly, the invention relates to a murine monoclonal antibody and a chimeric monoclonal antibody that react with a cell membrane antigen associated with a large variety of human carcinomas including carcinomas of the colon, breast, ovary and lung. The murine monoclonal antibody is highly specific for carcinomas, showing none to very low reactivity with normal human tissues or other types of tumors such as lymphomas or sarcomas. The antibodies of the invention have several added advantages. First, they internalize within the carcinoma cells to which they bind. The BR96 antibodies of the invention are therefore useful for therapeutic applications, for example, as the antibody component of antibody-drug or antibody-toxin conjugates where internalization of the conjugate is desired. Second, the antibodies mediate antibody-dependent cellular cytotoxicity "ADCC", and complement-mediated cytotoxicity, "CDC". Third, the antibodies can kill antigen-positive tumor cells in the unconjugated form if present at a sufficient concentration. The antibodies are also useful in diagnostic methods, such as the detection of carcinomas by in vitro or in vivo technology.

Background of the Invention

Monoclonal antibodies to human tumor-associated differentiation antigens offer promises for the "targeting" of various antitumor agents such as radioisotopes, chemotherapeutic drugs, and toxins.

[Baldwin and Byers, (eds.), in "Monoclonal Antibodies for Cancer Detection and Therapy", London, Academic Press (1985)]. In addition, some monoclonal antibodies have the advantage of killing tumor cells via ADCC or CDC in the presence of human effector cells or serum [Hellstrom et al., Proc. Natl. Acad. Sci. USA 83:7059-7063 (1986)], and there are a few monoclonal antibodies that have a direct antitumor activity which does not depend on any host component [Drebin et al., Oncogene 2:387-394 (1988)].

Many monoclonal antibodies reactive with carcinoma-associated antigens are known [see, e.g., Papsidero, "Recent Progress In The Immunological Monitoring Of Carcinomas Using Monoclonal Antibodies, Semin. Surg. Oncol., 1 (4):171-81 (1985); Schlom et al., "Potential Clinical Utility Of Monoclonal Antibodies In The Management Of Human Carcinomas", Important Adv. Oncol., 170-92 (1985); Allum et al., "Monoclonal Antibodies In The Diagnosis And Treatment of Malignant Conditions", Surg. Ann., 18:41-64 (1986); and Houghton et al., "Monoclonal Antibodies: Potential Applications To The Treatment Of Cancer", Semin. Oncol., 13(2):165-79 (1986)].

These known monoclonal antibodies can bind to a variety of different carcinoma-associated antigens including glycoproteins, glycolipids and mucins [see, e.g., Fink et al., "Monoclonal Antibodies As Diagnostic Reagents for The Identification And Characterization Of Human Tumor Antigens", Prog. Clin. Pathol., 9:121-33 (1984)]. For example, monoclonal antibodies that bind to glycoprotein antigens on specific types of carcinomas include those described in United States Patent 4,737,579 (monoclonal antibodies to non-small cell lung carcinomas), United States Patent 4,753,894 (monoclonal antibodies to human breast cancer), United States Patent

4,579,827 (monoclonal antibodies to human gastrointestinal cancer), and United States Patent 4,713,352 (monoclonal antibodies to human renal carcinoma). Monoclonal antibody B72.3, which is one of the antibodies studied the most, recognizes a tumor-associated mucin antigen of greater than 1,000 kd molecular weight that is selectively expressed on a number of different carcinomas. Thus, B72.3 has been shown to react with 84% of breast carcinomas, 94% of colon carcinomas, 100% of ovarian carcinomas and 96% of non-small cell lung carcinomas [see Johnston, "Applications of Monoclonal Antibodies In Clinical Cytology As Exemplified By Studies With Monoclonal Antibody B72.3", Acta Cytol., 1(5): 537-56 (1987) and United States Patent 4,612,282, issued to Schlom et al.]. Another patented monoclonal antibody, KC-4, [see United States Patent 4,708,930], recognizes an approximately 400-500 kd protein antigen expressed on a number of carcinomas, such as colon, prostate, lung and breast carcinoma. It appears that neither the B72.3 nor KC-4 antibodies internalize within the carcinoma cells with which they react.

Monoclonal antibodies reactive with glycolipid antigens associated with tumor cells have been disclosed. For example, Young et al., "Production Of Monoclonal Antibodies Specific For Two Distinct Steric Portions Of The Glycolipid Ganglio-N-Triosylceramide (Asialo GM₂)", J. Exp. Med., 150: 1008-1019 (1979) disclose the production of two monoclonal antibodies specific for asialo GM₂, a cell surface glycosphingolipid antigen that was established as a marker for BALB/c V3T3 cells transformed by Kirsten murine sarcoma virus. See, also, Kniep et al., "Gangliotriaosylceramide (Asialo GM₂) A Glycosphingolipid Marker For Cell Lines Derived From Patients With Hodgkin's Disease", J. Immunol., 131(3): 1591-94 (1983)

and United States Patent 4,507,391 (monoclonal antibody to human melanoma).

Other monoclonal antibodies reactive with glycolipid antigens on carcinoma cells include those described by Rosen et al., "Analysis Of Human Small Cell Lung Cancer Differentiation Antigens Using A Panel Of Rat Monoclonal Antibodies", Cancer Research, 44:2052-61 (1984) (monoclonal antibodies to human small cell lung cancer), Varki et al., "Antigens Associated with a Human Lung Adenocarcinoma Defined by Monoclonal Antibodies", Cancer Research 44:681-87 (1984); (monoclonal antibodies to human adenocarcinomas of the lung, stomach and colon and melanoma), and United States Patent 4,579,827 (monoclonal antibodies to human colon adenocarcinoma). See, also, Hellstrom et al., "Antitumor Effects Of L6, An IgG2a Antibody That Reacts With Most Human Carcinomas", Proc. Natl. Acad. Sci. USA, 83:7059-63 (1986) which describes the L6 monoclonal antibody that recognizes a carbohydrate antigen expressed on the surface of human non-small cell lung carcinomas, breast carcinomas and colon carcinomas.

Additional monoclonal antibodies exhibiting a high specific reactivity to the majority of cells from a wide range of carcinomas are greatly needed. This is so because of the antigenic heterogeneity of many carcinomas which often necessitates, in diagnosis or therapy, the use of a number of different monoclonal antibodies to the same tumor mass. There is a further need, especially for therapy, for so called "internalizing" antibodies, i.e., antibodies that are easily taken up by the tumor cells to which they bind. Antibodies of this type find use in therapeutic methods utilizing antibody-drug or antibody-toxin conjugates wherein a therapeutic antitumor agent is linked to an antibody for delivery to the tumor, where the antibody binds to the tumor-associated antigen with

which it is reactive and "delivers" the antitumor agent inside the tumor cells [see, e.g., Embleton et al., "Antibody Targeting Of Anti-Cancer Agents", in Monoclonal Antibodies For Cancer Detection and Therapy, pp. 317-44 (Academic Press, 1985)]. Antibodies to tumor-associated antigens which are not able to internalize within the tumor cells to which they bind are generally not useful to prepare conjugates with antitumor drugs or toxins, since these would not be able to reach their site of action within the cell. Other approaches would then be needed so as to use such antibodies therapeutically.

Several internalizing antibodies reacting with lymphocyte antigens are known. In contrast, such antibodies are rare when dealing with solid tumors. One of the few examples of an internalizing antibody reacting with carcinomas is an antibody disclosed in Domingo et al., "Transferrin Receptor As A Target For Antibody-Drug Conjugates" Methods Enzymol. 112:238-47 (1985). This antibody is reactive with the human transferrin-receptor glycoprotein expressed on tumor cells. However, because the transferrin-receptor is also expressed on many normal tissues, and often at high levels, the use of an anti-transferrin-receptor antibody in a antibody-drug or antibody-toxin conjugate may have significant toxic effects on normal cells. The utility of this antibody for selective killing or inhibition of tumor cells is therefore questionable. Another internalizing antibody is BR64 (disclosed in co-pending patent applications U.S. Serial No. 289,635, filed December 22, 1988, and Serial No. 443,696 filed November 29, 1989, and incorporated by reference herein), which binds to a large spectrum of human carcinomas.

The cell fusion technique for the production of monoclonal antibodies [Kohler and Milstein, Nature (London) 256:495 (1975)] has permitted the development of

a number of murine monoclonal antibodies reactive with antigens, including previously unknown antigens. Murine monoclonal antibodies, however, may be recognized as foreign substances by the human immune system and neutralized such that their potential in human therapy is not realized. Therefore, recent efforts have focused on the production of so-called "chimeric" antibodies by the introduction of DNA into mammalian cells to obtain expression of immunoglobulin genes [Oi et al., Proc. Natl. Acad. Sci. USA 80:825 (1983); Potter et al., Proc. Natl. Acad. Sci. USA 81:7161; Morrison et al., Proc. Natl. Acad. Sci. USA 81:6581 (1984); Sahagan et al., J. Immunol. 137:1066 (1986); Sun et al., Proc. Natl. Acad. Sci. 84:214 (1987)].

Chimeric antibodies are immunoglobulin molecules comprising a human and non-human portion. More specifically, the antigen combining region (variable region) of a chimeric antibody is derived from a non-human source (e.g. murine) and the constant region of the chimeric antibody which confers biological effector function to the immunoglobulin is derived from a human source. The chimeric antibody should have the antigen binding specificity of the non-human antibody molecule and the effector function conferred by the human antibody molecule.

In general, the procedures used to produce chimeric antibodies involve the following steps:

- a) identifying and cloning the correct gene segment encoding the antigen binding portion of the antibody molecule; this gene segment (known as the VDJ, variable, diversity and joining regions for heavy chains or VJ, variable, joining regions for light chains or simply as the V or variable region) may be in either the cDNA or genomic form;

- b) cloning the gene segments encoding the constant region or desired part thereof;
- c) ligating the variable region with the constant region so that the complete chimeric antibody is encoded in a transcribable and translatable form;
- d) ligating this construct into a vector containing a selectable marker and gene control regions such as promoters, enhancers and poly(A) addition signals;
- e) amplifying this construct in bacteria;
- f) introducing this DNA into eukaryotic cells (transfection) most often mammalian lymphocytes;
- g) selecting for cells expressing the selectable marker;
- h) screening for cells expressing the desired chimeric antibody; and
- k) testing the antibody for appropriate binding specificity and effector functions.

Antibodies of several distinct antigen binding specificities have been manipulated by these protocols to produce chimeric proteins [e.g. anti-TNP: Boulianne et al., Nature 312:643 (1984); and anti-tumor antigens: Sahagan et al., J. Immunol. 137:1066 (1986)]. Likewise, several different effector functions have been achieved by linking new sequences to those encoding the antigen binding region. Some of these include enzymes [Neuberger et al., Nature 312:604 (1984)], immunoglobulin constant regions from another species and constant regions of another immunoglobulin chain (Sharon et al., Nature 309:364 (1984); Tan et al., J. Immunol. 135:3565-3567 (1985)].

The discovery of homologous recombination in mammalian cells permits the targeting of new sequences to specific chromosomal loci. Homologous recombination occurs when cultured mammalian cells integrate exogenous DNA into chromosomal DNA at the chromosome location which contains sequences homologous to the plasmid sequences

[Folger et al., Mol. Cell. Biol. 2:1372-1387 (1982); Folger et al., Symp. Quant. Biol. 49:123-138 (1984); Kucherlapati et al., Proc. Natl. Acad. Sci. USA 81:3153-3157 (1984); Lin et al., Proc. Natl. Acad. Sci. USA 82:1391-1395 (1985); de Saint Vincent et al., Proc. Natl. Acad. Sci. USA 80:2002-2006 (1983); Shaul et al., Proc. Natl. Acad. Sci. USA 82:3781-3784 (1985)]. The potential for homologous recombination within cells permits the modification of endogenous genes in situ. Conditions have been found where the chromosomal sequence can be modified by introducing into the cell a plasmid DNA which contains a segment of DNA homologous to the target locus and a segment of new sequences with the desired modification [Thomas et al., Cell 44:419-428 (1986); Smithies et al., Nature 317:230-234 (1985); Smith et al., Symp. Quant. Biol. 49:171-181 (1984)]. Homologous recombination between mammalian cell chromosomal DNA and the exogenous plasmid DNA can result in the integration of the plasmid or in the replacement of some of the chromosomal sequences with homologous plasmid sequences. This can result in placing a desired new sequence at the endogenous target locus.

The process of homologous recombination has been evaluated using genes which offer dominant selection such as NEO and HPRT for a few cell types [Song et al., Proc. Natl. Acad. Sci. USA 84:6820-6824 (1987); Rubinitz and Subramani, Mol. Cell Biol. 6:1608-1614 (1986); and Liskay, Cell 35:157-164 (1983)]. Recently, procedures for modifying antibody molecules and for producing chimeric antibody molecules using homologous recombination to target gene modification have been described [Fell et al., Proc. Natl. Acad. Sci. USA 86:8507-8511 (1989); and co-pending U.S. patent applications Serial No. 243,873 filed September 14, 1988, and Serial No. 468,035 filed January 22, 1990, assigned

to the same assignee as the present application, all of which are incorporated by reference herein].

The most direct way to apply antitumor monoclonal antibodies clinically is to administer them in unmodified form, using monoclonal antibodies which display antitumor activity in vitro and in animal models. Most monoclonal antibodies to tumor antigens do not appear to have any antitumor activity by themselves, but certain monoclonal antibodies are known which mediate complement-dependent cytotoxicity (CDC), i.e. kill human tumor cells in the presence of human serum as a source of complement [see, e.g. Hellstrom et al., Proc. Natl. Acad. Sci. USA 82:1499-1502 (1985)], or antibody-dependent cellular cytotoxicity (ADCC) together with effector cells such as human NK cells or macrophages. To detect ADCC and CDC activity monoclonal antibodies are tested for lysing cultured ⁵¹Cr-labeled tumor target cells over a 4-hour incubation period.

Target cells are labeled with ⁵¹Cr and then exposed for 4 hours to a combination of effector cells (in the form of human lymphocytes purified by the use of a lymphocyte-separation medium) and antibody, which is added in concentrations varying between 0.1 µg/ml and 10 µg/ml. The release of ⁵¹Cr from the target cells is measured as evidence of tumor-cell lysis (cytotoxicity). Controls include the incubation of target cells alone or with either lymphocytes or monoclonal antibody separately. The total amount of ⁵¹Cr that can be released is measured and ADCC is calculated as the percent killing of target cells observed with monoclonal antibody plus effector cells as compared to target cells being incubated alone. The procedure for CDC is identical to the one used to detect ADCC except that human serum, as a source of complement, (diluted 1:3 to 1:6) is added in place of the effector cells.

Monoclonal antibodies with ADCC and CDC activity are considered for therapeutic use because they often have anti-tumor activities in vivo. Antibodies lacking ADCC and CDC activity in vitro, on the other hand, are commonly ineffective in vivo unless used as carriers of antitumor agents. The ability of a monoclonal antibody to activate the host's complement may prove to be therapeutically beneficial not only because tumor cells may be killed, but also because the blood supply to tumors may increase, thus facilitating the uptake of drugs [see Hellstrom et al., "Immunological Approaches to Tumor Therapy: Monoclonal Antibodies, Tumor Vaccines, and Anti-Idiotypes, in Covalently Modified Antigens and Antibodies in Diagnosis and Therapy, Quash & Rodwell, eds., Marcel Dekker, pp. 15-18 (1989)]. Among mouse monoclonal antibodies, the IgG2a and IgG3 isotypes are most commonly associated with ADCC and CDC. Antibodies having both ADCC and CDC activity have high selectivity for killing only the tumor cells to which they bind and would be unlikely to lead to toxic effects if nonspecifically trapped in lung, liver or other organs. This may give such antibodies an advantage over radiolabelled antibodies or certain types of immunoconjugates.

Very few antibodies are able to kill tumor cells by themselves, that is, in the absence of effector cells or complement as in ADCC or CDC. BR96 is such an antibody, because it can kill cells by itself at an antibody concentration of approximately 10 $\mu\text{g/ml}$ or higher. Such antibodies are of particular interest since they can interfere with some key event in the survival of neoplastic cells.

It is thus apparent that an antibody that displays a high degree of selectivity to a wide range of carcinomas, has anti-tumor activity by itself, and is

capable of being readily internalized by tumor cells, may be of great benefit in tumor therapy.

SUMMARY OF THE INVENTION

The present invention provides internalizing antibodies that are highly selective for a range of human carcinomas. More specifically, the novel antibodies of the invention, designated as BR96 antibodies, are a murine monoclonal antibody and a chimeric antibody that bind to a cell membrane antigen found on human carcinoma cells. The antibodies are highly reactive with carcinoma cells, such as those derived from breast, lung, colon and ovarian carcinomas, showing no or limited reactivity with normal human cells or other types of tumors such as lymphomas or sarcomas. In addition, the antibodies of the invention internalize within the carcinoma cells to which they bind and they are capable of killing tumor cells by themselves, i.e., not in conjugated form, and without effector cells or complement. Thus the BR96 antibodies are of particular use in therapeutic applications, for example to react with tumor cells, and in conjugates as a target-selective carrier of various agents which have antitumor effects including chemotherapeutic drugs, toxins, immunological response modifiers, enzymes and radioisotopes. The antibodies can thus be used as a component of various immunoconjugates including antibody-drug and antibody-toxin conjugates where internalization of the conjugate is favored, and after radiolabelling to deliver radioisotope to tumors. The BR96 antibodies can also be therapeutically beneficial even in the unmodified form. Furthermore, the antibodies are useful for in vitro or in vivo diagnostic methods designed to detect carcinomas.

Brief Description of the Drawings

Figure 1 depicts the percent inhibition of thymidine incorporation into the DNA of 3396 breast carcinoma cells treated with a BR96-RA immunotoxin at varying concentrations as described in Example 3, infra. BR6-RA is an internalizing antibody which is used as a negative control because it does not bind to the 3396 cells.

Figure 2 depicts the percent inhibition of thymidine incorporation into the DNA of 2707 lung carcinoma cells treated with a BR96-RA immunotoxin at varying concentrations as described in Example 3, infra. BR6-RA is an internalizing antibody which also binds to the 2707 cells.

Figure 3 depicts the percent inhibition of thymidine incorporation into the DNA of HCT116 colon carcinoma cells treated with a BR96-RA immunotoxin at varying concentrations as described in Example 3, infra. BR96 does not bind to HCT 116 cells.

Figure 4 depicts the percent inhibition of thymidine incorporation into the DNA of C colon carcinoma cells treated with a BR96-RA immunotoxin at varying concentrations as described in Example 3, infra. BR6-RA does not bind to the C cells; L6-RA binds to the C cells but does not internalize.

Figure 5 depicts the percent inhibition of thymidine incorporation into the DNA of 3347 colon carcinoma cells treated with a BR96-RA immunotoxin at varying concentrations as described in Example 3, infra. BR96 does not bind to these cells while BR6 does.

Figure 6 depicts the results of FACS analysis of the cytotoxicity of propidium iodide stained 3396 breast carcinoma cells, 2987 lung carcinoma cells and 3619 colon carcinoma cells, as described in Example 4, infra.

Figure 7 depicts the effects of BR96 on cell proliferation of various cell lines as described in Example 4, infra.

Figure 8 illustrates the effect of BR96 on cell growth of various cell lines, measured by a staining method as described in Example 4, infra.

Figure 9 illustrates the results of tests to determine ADCC activity of BR96 as described in Example 5, infra.

Figure 10 describes the results of tests to determine CDC activity of BR96 as described in Example 6, infra.

Figure 11 is a bar graph of the results of testing the reactivity of BR96 against glycolipids as described in Example 7, infra.

Figure 12 is a bar graph of the results of testing the reactivity of BR96 against neoglycoproteins as described in Example 7, infra.

Figure 13 is a graph of the binding activity of BR96 F(ab')₂ fragments compared to that of whole BR96 monoclonal antibody in an ELISA using goat anti-K light chain detecting reagent, as described in Example 8, infra.

Figure 14 is a graph of the binding activity of BR96 F(ab')₂ fragments as compared to that of whole BR96 monoclonal antibody in an ELISA using peroxidase conjugated protein A detecting reagent, as described in Example 8, infra.

Figure 15 is a diagram of vector phgamma₁HC-D used in the electroporation procedure, as described in Example 9, infra.

Figure 16 is a diagram of vector pSV₂gpt/C_K used in the electroporation procedure, as described in Example 9, infra.

Figure 17 is a graph depicting the results of the competition binding assay comparing the binding of the murine BR96 monoclonal antibody of the invention with binding of the chimeric BR96 antibody of the invention, as described in Example 9, infra.

Figure 18 depicts the results of FACS analysis of the cytotoxicity of the antibodies of the invention on 3396 breast carcinoma cells as described in Example 10, infra.

Figure 19 depicts the results of FACS analysis of the cytotoxicity of the antibodies of the invention on 2987 human lung adenocarcinoma cells as described in Example 10, infra.

Figure 20, depicts the results of FACS analysis of the cytotoxicity of the antibodies of the invention on MCF-7 cells as described in Example 10, infra.

Figure 21, depicts the percent inhibition of thymidine incorporation into the DNA of 3396 breast carcinoma cells treated with a murine BR96-RA immunotoxin and chimeric (Chi)BR96-RA at varying concentrations as described in Example 10, infra.

Figure 22, depicts the percent inhibition of thymidine incorporation into the DNA of 3630 breast carcinoma cells treated with a murine BR96-RA immunotoxin and ChiBR96-RA at varying concentrations, as described in Example 10, infra.

Figure 23, is a graph depicting the antitumor effects of unmodified BR96 on the tumor cell line H2987, as described in Example 11, infra.

Figure 24, is a bar graph illustrating the absence of tumors at the end of treatment for animals treated with BR96, as described in Example 11, infra.

Figure 25, depicts the dose effects of BR96 antibody after implantation of H2707 cells, as determined by tumor volume, as described in Example 11, infra.

Figure 26, illustrates the effects of treatment with $F(ab')_2$ fragments and Chimeric BR96 after implantation of 2707 cells as determined by tumor volume, as described in Example 11, infra.

Figure 27, illustrates the absence of tumors after treatment with various doses of BR96 antibody, as compared to the effects of $F(ab')_2$ fragments and Chimeric BR96, as described in Example 11, infra.

Detailed Description of the Invention

In order that the invention herein described may be more fully understood, the following detailed description is set forth.

The present invention relates to novel antibodies that are highly specific for carcinoma cells. More particularly, the antibodies react with a range of carcinomas such as breast, lung, ovary and colon carcinomas, while showing none or limited reactivity with normal human tissues or other types of tumors such as sarcomas or lymphomas.

The BR96 antibodies can be used to isolate and characterize the antigen to which they bind. Thus, the BR96 antibodies can be used as a probe to identify and characterize the epitope recognized and to further define the cell membrane antigen with which they react [see, e.g., Nudelman et al., "Characterization of Human Melanoma-Associated Ganglioside Antigen Defined By A Monoclonal Antibody, 4.2", J. Biol. Chem., 257 (1)12752-56 (1982) and Hakomori, "Tumor Associated Carbohydrate Antigens", Ann. Rev. Immunol., 2:103-26 (1984)].

Results of preliminary epitope screens conducted on monoclonal antibody BR96 have indicated that the antigen on the carcinoma cells to which BR96 antibody binds is a fucosylated variant of the Lewis Y antigen. The Lewis Y (Le^Y) antigen has been described by Abe et al., J. Biol. Chem. 258:8934 (1983); Lloyd et al., Immunogenetics 17:537 (1983); Brown et al., Biosci. Rep. 3:163 (1983); Hellstrom et al., Cancer Res. 46:3917 (1986). Fucosylated Lewis Y antigen has been described by Abe et al., Cancer Res. 46:2639-2644 (1986).

The monoclonal antibody of the invention can be produced using well-established hybridoma techniques first introduced by Kohler and Milstein [see, Kohler and Milstein, "Continuous Cultures Of Fused Cells Secreting Antibody Of Pre-Defined Specificity", Nature, 256:495-97 (1975). See, also, Brown et al., "Structural Characterization Of Human Melanoma-Associated Antigen p97 with Monoclonal Antibodies", J. Immunol., 127 (2):539-46 (1981)]; Brown et al., "Protein Antigens Of Normal And Malignant Human Cells Identified By Immunoprecipitation With Monoclonal Antibodies", J. Biol. Chem., 255:4980-83 (1980); Yeh et al., "Cell Surface Antigens Of Human Melanoma Identified By Monoclonal Antibody", Proc. Natl. Acad. Sci. USA, 76(6):297-31 (1979); and Yeh et al., "A Cell-Surface Antigen Which is Present In the Ganglioside Fraction And Shared By Human Melanomas", Int. J. Cancer, 29:269-75 (1982).]

These techniques involve the injection of an immunogen (e.g., cells or cellular extracts carrying the antigen or purified antigen) into an animal (e.g., a mouse) so as to elicit a desired immune response (i.e., antibodies) in that animal. After a sufficient time, antibody-producing lymphocytes are obtained from the animal either from the spleen, lymph nodes or peripheral blood. Preferably, the lymphocytes are obtained from the spleen. The splenic lymphocytes are then fused with a myeloma cell line, usually in the presence of a fusing agent such as polyethylene glycol (PEG). Any of a number of myeloma cell lines may be used as a fusion partner according to standard techniques; for example, the P3-NS1/1A₂4-1, P3-x63-Ag8.653 or Sp2/O Ag14 myeloma lines. These myeloma lines are available from the American Type Culture Collection, ("ATCC") in Rockville, Maryland.

The resulting cells, which include the desired hybridomas, are then grown in a selective medium, such as

HAT medium, in which unfused parental myeloma or lymphocyte cells eventually die. Only the hybridoma cells survive and can be grown under limiting conditions to obtain isolated clones. The supernatants of the hybridomas are screened for the presence of antibody of that desired specificity, e.g., by immunoassay techniques using the antigen that had been used for immunization. Positive clones can then be subcloned under limiting dilution conditions and the monoclonal antibody produced can be isolated. Hybridomas produced according to these methods can be propagated in vitro or in vivo (in ascites fluid) using techniques known in the art [see, generally, Fink et al., supra at page 123, Fig. 6-11]. Commonly used methods for purifying monoclonal antibodies include ammonium sulfate precipitation, ion exchange chromatography, and affinity chromatography [see, e.g., Zola et al., "Techniques For The Production And Characterization Of Monoclonal Hybridoma Antibodies", in Monoclonal Hybridoma Antibodies: Techniques And Applications, Hurell (ed.), pp. 51-52 (CRC Press 1982)].

According to a preferred embodiment, a monoclonal antibody of this invention, designated BR96, was produced via the hybridoma techniques described hereinbelow using a breast cancer cell line 3396 as the immunogen. The BR96 hybridoma, prepared as described hereinbelow and producing the BR96 antibody, was deposited on February 22, 1989 with the ATCC, and has there been identified as follows:

BR96 ATCC Accession No.: HB 10036

The BR96 antibody is of the IgG3 subclass. The antibody displays a high specificity for carcinoma cells of different organ types, for example, tumors of the breast, lung, colon and ovary as well as cultured cell lines established from various breast, lung and colon

carcinomas. Furthermore, the BR96 antibody shows no binding to other types of tumor cells such as the T-cell lymphoma cells lines, CEM and MOLT-4, the B cell lymphoma cell line P3HR-1 or melanoma cells lines. The BR96 antibody is able to be internalized in antigen-positive tumor cells, is toxic on antigen-positive tumor cells, mediates ADCC and CDC activity, and surprisingly, is cytotoxic alone, i.e. in unmodified form. The BR96 antibodies appear to recognize a Le^x antigen.

According to another embodiment, F(ab')₂ fragments of the BR96 monoclonal antibody were produced by pepsin digestion of purified BR96 [Nisonoff et al., "The Antibody Molecule",

Academic Press, New York (1975)], as described hereinbelow. The binding of the F(ab')₂ fragments to tumor (3396) and MCF7 cells was shown to be comparable to the binding of the whole BR96 monoclonal antibody.

In another preferred embodiment, the chimeric (murine/human) antibody of the invention was produced using a two-step homologous recombination procedure as described by Fell et al., in Proc. Natl. Acad. Sci. USA 86:8507-8511 (1989) and in co-pending patent application U.S. Serial Number 243,873, filed September 14, 1988, and Serial No. 468,035, filed June 22, 1990, assigned to the same assignee as the present application; the disclosures of all of these documents are incorporated in their entirety by reference herein. This two-step protocol involves use of a target vector encoding human IgGgamma1 heavy chain to transfect a mouse hybridoma cell line expressing murine BR96 monoclonal antibody (hybridoma ATCC No. HB 10036) to produce a hybridoma expressing a BR96 chimeric antibody containing human IgGgamma1 heavy chain. This hybridoma is then transfected with a target vector containing DNA encoding human kappa (K) light

chain to produce a murine hybridoma expressing a BR96 chimeric antibody containing human IgG γ 1 heavy chain and human K light chain. The target vectors used to transfect the hybridomas are the pH γ 1HC-DD₄ vector digested with Xba1 enzyme (Oncogen, Seattle, WA) and the HindIII digested pSV₂gpt/C_K vector (Oncogen, Seattle, WA).

The chimeric BR96 hybridoma, identified herein as ChiBR96, prepared as described hereinbelow and producing the chimeric human/murine BR96 antibody, was deposited on May 23, 1990, with the ATCC, and has there been identified as follows:

ChiBR96 ATCC Accession No.: HB 10460

Once the hybridoma that expresses the chimeric antibody is identified, the hybridoma is cultured and the desired chimeric molecules are isolated from the cell culture supernatant using techniques well known in the art for isolating monoclonal antibodies.

The term "BR96 antibody" as used herein includes whole, intact polyclonal and monoclonal antibody materials such as the murine BR96 monoclonal antibody produced by hybridoma ATCC No. HB 10036, and chimeric antibody molecules such as chimeric BR96 antibody produced by hybridoma ATCC No. 10460. The BR96 antibody described above includes any fragments thereof containing the active antigen-binding region of the antibody such as Fab, F(ab')₂, and Fv fragments, using techniques well established in the art [see, e.g., Rouseaux et al., "Optimal Conditions For The Preparation of Proteolytic Fragments From Monoclonal IgG of Different Rat IgG Subclasses", in Methods Enzymol., 121:663-69 (Academic

Press 1986)]. The BR96 antibody of the invention also includes fusion proteins.

In addition, the BR96 antibody of this invention does not display any immunohistologically detectable binding to normal human tissues from major organs, such as kidney, spleen, liver, skin, lung, breast, colon, brain, thyroid, heart, lymph nodes or ovary. Nor does the antibody react with peripheral blood leukocytes. BR96 antibody displays limited binding to some cells in the tonsils and testes, and binds to acinar cells in the pancreas, and to epithelial cells in the stomach and esophagus. Thus, the BR96 antibody is superior to most known antitumor antibodies in the high degree of specificity for tumor cells as compared to normal cells [see, e.g., Hellstrom et al., "Immunological Approaches To Tumor Therapy: Monoclonal Antibodies, Tumor Vaccines, And Anti-Idiotypes", in Covalently Modified Antigens And Antibodies In Diagnosis And Therapy, Quash/Rodwell (eds.), pp. 1-39 (Marcell Dekker, Inc., 1989) and Bagshawe, "Tumour Markers - Where Do We Go From Here", Br. J. Cancer, 48:167-75 (1983)].

In addition, the present invention encompasses antibodies that are capable of binding to the same antigenic determinant as the BR96 antibodies and competing with the antibodies for binding at that site. These include antibodies having the same antigenic specificity as the BR96 antibodies but differing in species origin, isotype, binding affinity or biological functions (e.g., cytotoxicity). For example, class, isotype and other variants of the antibodies of the invention having the antigen-binding region of the BR96 antibody can be constructed using recombinant class-switching and fusion techniques known in the art [see, e.g., Thammana et al., "Immunoglobulin Heavy Chain Class Switch From IgM to IgG In A Hybridoma", Eur. J.

Immunol., 13:614 (1983); Spira et al., "The Identification Of Monoclonal Class Switch Variants By Subselection And ELISA Assay", J. Immunol. Meth., 74:307-15 (1984); Neuberger et al., "Recombinant Antibodies Possessing Novel Effector Functions", Nature, 312: 604-608 (1984); and Oi et al., "Chimeric Antibodies", Biotechniques, 4 (3):214-21 (1986)]. Thus, other chimeric antibodies or other recombinant antibodies (e.g., fusion proteins wherein the antibody is combined with a second protein such as a lymphokine or a tumor inhibitory growth factor) having the same binding specificity as the BR96 antibodies fall within the scope of this invention.

Also included within the scope of the invention are anti-idiotypic antibodies to the BR96 antibody of the invention. These anti-idiotypic antibodies can be produced using the BR96 antibody and the fragments thereof as immunogen and are useful for diagnostic purposes in detecting humoral response to tumors and in therapeutic applications, e.g., in a vaccine, to induce an anti-tumor response in patients [see, e.g., Nepom et al., "Anti-Idiotypic Antibodies And The Induction Of Specific Tumor Immunity", in Cancer And Metastasis Reviews, 6:487-501 (1987)].

The BR96 antibody of the invention is also useful for diagnostic applications, both in vitro and in vivo, for the detection of human carcinomas that possess the antigen for which the antibodies are specific. In vitro diagnostic methods include immunohistological detection of tumor cells (e.g., on human tissue, cells or excised tumor specimens) or serologic detection of tumor-associated antigens (e.g., in blood samples or other biological fluids).

Immunohistochemical techniques involve staining a biological specimen such as a tissue specimen with the BR96 antibody of the invention and then detecting the presence on the specimen of the antibody complexed to its antigen. The formation of such antibody-antigen complexes with the specimen indicates the presence of carcinoma cells in the tissue. Detection of the antibody on the specimen can be accomplished using techniques known in the art such as immunoenzymatic techniques, e.g., the immunoperoxidase staining technique or the avidin-biotin (ABC) technique, or immunofluorescence techniques [see, e.g., Ciocca et al., "Immunohistochemical Techniques Using Monoclonal Antibodies", Meth. Enzymol., 121:562-79 (1986); Hellstrom et al., "Monoclonal Mouse Antibodies Raised Against Human Lung Carcinoma", Cancer Research, 46:3917-23 (1986); and Kimball (ed.), Introduction To Immunology (2nd Ed.), pp. 113-117 (Macmillan Pub. Co. 1986)]. For example, immunoperoxidase staining was used as described in Example 2, infra, to demonstrate the reactivity of the BR96 antibody with lung, breast, colon, and ovary carcinomas and the low reactivity of the antibody with normal human tissue specimens.

Serologic diagnostic techniques involve the detection and quantitation of tumor-associated antigens that have been secreted or "shed" into the serum or other biological fluids of patients thought to be suffering from carcinoma. Such antigens can be detected in the body fluids using techniques known in the art such as radioimmunoassays (RIA) or enzyme-linked immunosorbent assays (ELISA) wherein an antibody reactive with the "shed" antigen is used to detect the presence of the antigen in a fluid sample [see, e.g., Uotila et al., "Two-Site Sandwich ELISA With Monoclonal Antibodies To Human AFP", J. Immunol. Methods, 42:11 (1981) and Allum et al., supra at pp. 48-51]. These assays, using the BR96

antibodies disclosed herein, can therefore be used for the detection in biological fluids of the glycolipid antigen with which the BR96 antibodies react and thus the detection of human carcinoma in patients. Thus, it is apparent from the foregoing that the BR96 antibodies of the invention can be used in most assays involving antigen-antibody reactions. These assays include, but are not limited to, standard RIA techniques, both liquid and solid phase, as well as ELISA assays, immunofluorescence techniques, and other immunocytochemical assays [see, e.g., Sikora et al. (eds), Monoclonal Antibodies, pp. 32-52 (Blackwell Scientific Publications 1984)].

The invention also encompasses diagnostic kits for carrying out the assays described above. In one embodiment, the diagnostic kit comprises the BR96 monoclonal antibody, fragments thereof, fusion proteins or chimeric antibody of the invention, and a conjugate comprising a specific binding partner for the BR96 antibody and a label capable of producing a detectable signal. The reagents can also include ancillary agents such as buffering agents and protein stabilizing agents (e.g., polysaccharides). The diagnostic kit can further comprise, where necessary, other components of the signal-producing system including agents for reducing background interference, control reagents or an apparatus or container for conducting the test. In another embodiment, the diagnostic kit comprises a conjugate of the BR96 antibodies of the invention and a label capable of producing a detectable signal. Ancillary agents as mentioned above can also be present.

The BR96 antibody of the invention is also useful for in vivo diagnostic applications for the detection of human carcinomas. One such approach involves the detection of tumors in vivo by tumor imaging

techniques. According to this approach, the BR96 antibody is labeled with an appropriate imaging reagent that produces a detectable signal. Examples of imaging reagents that can be used include, but are not limited to, radiolabels such as ^{131}I , ^{111}In , ^{123}I , $^{99\text{m}}\text{Tc}$, ^{32}P , ^{125}I , ^3H , and ^{14}C , fluorescent labels such as fluorescein and rhodamine, and chemiluminescers such as luciferin. The antibody can be labeled with such reagents using techniques known in the art. For example, see Wensel and Mearns, Radioimmunoimaging And Radioimmunotherapy, Elsevier, New York (1983) for techniques relating to the radiolabeling of antibodies [see also, Colcher et al., "Use Of Monoclonal Antibodies As Radiopharmaceuticals For The Localization Of Human Carcinoma Xenografts In Athymic Mice", Meth. Enzymol., 121:802-16 (1986)].

In the case of radiolabeled antibody, the antibody is administered to the patient, localizes to the tumor bearing the antigen with which the antibody reacts, and is detected or "imaged" in vivo using known techniques such as radionuclear scanning using, e.g., a gamma camera or emission tomography [see, e.g., Bradwell et al., "Developments In Antibody Imaging", in Monoclonal Antibodies For Cancer Detection And Therapy, Baldwin et al. (eds.), pp. 65-85 (Academic Press 1985)]. The antibody is administered to the patient in a pharmaceutically acceptable carrier such as water, saline, Ringer's solution, Hank's solution or nonaqueous carriers such as fixed oils. The carrier may also contain substances that enhance isotonicity and chemical stability of the antibody such as buffers or preservatives. The antibody formulation is administered, for example, intravenously, at a dosage sufficient to provide enough gamma emission to allow visualization of the tumor target site. Sufficient time should be allowed between administration of the antibody and detection to allow for localization to the tumor target. For a

general discussion of tumor imaging, see Allum et al., supra at pp. 51-55.

The properties of the BR96 antibody: a) very high specificity for tumor cells; b) internalization; c) toxicity to antigen-positive tumor cells alone, i.e. in unmodified form, when used at appropriate concentrations; and d) CDC and ADCC activity, suggest a number of in vivo therapeutic applications. First, the BR96 antibody can be used alone to target and kill tumor cells in vivo. The antibody can also be used in conjunction with an appropriate therapeutic agent to treat human carcinoma. For example, the antibody can be used in combination with standard or conventional treatment methods such as chemotherapy, radiation therapy or can be conjugated or linked to a therapeutic drug, or toxin, as well as to a lymphokine or a tumor-inhibitory growth factor, for delivery of the therapeutic agent to the site of the carcinoma. Techniques for conjugating such therapeutic agents to antibodies are well known [see, e.g., Arnon et al., "Monoclonal Antibodies For Immunotargeting Of Drugs In Cancer Therapy", in Monoclonal Antibodies And Cancer Therapy, Reisfeld et al. (eds.), pp. 243-56 (Alan R. Liss, Inc. 1985); Hellstrom et al., "Antibodies For Drug Delivery", in Controlled Drug Delivery (2nd Ed.), Robinson et al. (eds.), pp. 623-53 (Marcel Dekker, Inc. 1987); Thorpe, "Antibody Carriers Of Cytotoxic Agents In Cancer Therapy: A Review", in Monoclonal Antibodies '84: Biological And Clinical Applications, Pinchera et al. (eds.), pp. 475-506 (1985); and Thorpe et al., "The Preparation And Cytotoxic Properties Of Antibody-Toxin Conjugates", Immunol. Rev., 62:119-58 (1982)]. The BR96 antibody of the invention is particularly suited for use in a therapeutic conjugate because it is readily internalized within the carcinoma cells to which it binds and thus can deliver the therapeutic agent to intracellular sites of action.

Alternatively, the BR96 antibody can be coupled to high-energy radiation, e.g., a radioisotope such as ¹³¹I; which, when localized at the tumor site, results in a killing of several cell diameters [see, e.g., Order, "Analysis, Results, And Future Prospective Of The Therapeutic Use Of Radiolabeled Antibody In Cancer Therapy", in Monoclonal Antibodies For Cancer Detection And Therapy, Baldwin et al. (eds.), pp. 303-16 (Academic Press 1985)]. According to yet another embodiment, the BR96 antibody can be conjugated to a second antibody to form an antibody heteroconjugate for the treatment of tumor cells as described by Segal in United States Patent 4,676,980.

Still other therapeutic applications for the BR96 antibody of the invention include conjugation or linkage, e.g., by recombinant DNA techniques, to an enzyme capable of converting a prodrug into a cytotoxic drug and the use of that antibody-enzyme conjugate in combination with the prodrug to convert the prodrug to a cytotoxic agent at the tumor site [see, e.g., Senter et al., "Anti-Tumor Effects Of Antibody-alkaline Phosphatase", Proc. Natl. Acad. Sci. USA, 85:4842-46 (1988); "Enhancement of the in vitro and in vivo Antitumor Activities of Phosphorylated Mitomycin C and Etoposide Derivatives by Monoclonal ANTiobdy-Alkaline Phosphatase Conjugates", Cancer Research 49:5789-5792 (1989); and Senter, "Activation of Prodrugs by Antibody-Enzyme Conjugates: A New Approach to Cancer Therapy, FASEB J. 4:188-193 (1990)]. Still another therapeutic use for the BR96 antibody involves use, either in the presence of complement or as part of an antibody-drug or antibody-toxin conjugate, to remove tumor cells from the bone marrow of cancer patients. According to this approach, autologous bone marrow may be purged ex vivo by treatment with the antibody and the marrow infused back into the patient [see, e.g., Ramsay et al., "Bone Marrow

Purging Using Monoclonal Antibodies", J. Clin. Immunol., 8(2):81-88 (1988)].

Furthermore, chimeric or other recombinant BR96 antibodies of the invention, as described earlier, may be used therapeutically. For example, a fusion protein comprising at least the antigen-binding region of the BR96 antibody joined to at least a functionally active portion of a second protein having anti-tumor activity, e.g., a lymphokine or oncostatin, may be used to treat human carcinoma in vivo. Furthermore, recombinant techniques known in the art can be used to construct bispecific antibodies wherein one of the binding specificities of the antibody is that of BR96 [see, e.g. United States Patent 4,474,893].

Finally, anti-idiotypic antibodies of the BR96 antibody may be used therapeutically in active tumor immunization and tumor therapy [see, e.g., Hellstrom et al., "Immunological Approaches To Tumor Therapy: Monoclonal Antibodies, Tumor Vaccines, And Anti-Idiotypes", in Covalently Modified Antigens And Antibodies In Diagnosis And Therapy, supra at pp. 35-41].

It is apparent therefore that the present invention encompasses pharmaceutical compositions, combinations and methods for treating human carcinomas. For example, the invention includes pharmaceutical compositions for use in the treatment of human carcinomas comprising a pharmaceutically effective amount of a BR96 antibody and a pharmaceutically acceptable carrier. The compositions may contain the BR96 antibody either unmodified, conjugated to a therapeutic agent (e.g., drug, toxin, enzyme or second antibody) or in a recombinant form (e.g., chimeric or bispecific BR96). The compositions may additionally include other

antibodies or conjugates for treating carcinomas (e.g., an antibody cocktail).

The antibody compositions of the invention can be administered using conventional modes of administration including, but not limited to, intravenous, intraperitoneal, oral, intralymphatic or administration directly into the tumor. Intravenous administration is preferred.

The antibody compositions of the invention may be in a variety of dosage forms which include, but are not limited to, liquid solutions or suspensions, tablets, pills, powders, suppositories, polymeric microcapsules or microvesicles, liposomes, and injectable or infusible solutions. The preferred form depends upon the mode of administration and the therapeutic application.

The antibody compositions also preferably include conventional pharmaceutically acceptable carriers and adjuvants known in the art such as human serum albumin, ion exchangers, alumina, lecithin, buffer substances such as phosphates, glycine, sorbic acid, potassium sorbate, and salts or electrolytes such as protamine sulfate.

The most effective mode of administration and dosage regimen for the compositions of this invention depends upon the severity and course of the disease, the patient's health and response to treatment and the judgment of the treating physician. Accordingly, the dosages of the compositions should be titrated to the individual patient. Nevertheless, an effective dose of the antibody compositions of this invention may be in the range of from about 1 to about 2000 mg/m².

In order that the invention described herein may be more fully understood, the following examples are set forth. It should be understood that these examples are for illustrative purposes only and are not to be construed as limiting the scope of this invention in any manner.

EXAMPLE 1

Preparation Of The BR96 Monoclonal Antibody

The BR96 monoclonal antibody of the invention was produced using hybridoma fusion techniques as described previously by M. Yeh et al., Proc. Natl. Acad. Sci. USA, (1979), supra and Yeh et al., Int. J. Cancer (1982), supra. Briefly, a three month-old BALB/c mouse was immunized using as the immunogen explanted cultured cells from a human breast adenocarcinoma, designated 3396 or H3396 (from adenocarcinoma of the breast from a patient which had been established in culture at Oncogen, Seattle, Washington). The mouse received injections on five occasions: on the first four occasions, the mouse received one intraperitoneal injection and 1 subcutaneous injection split between 4 sites on the mouse. On the fifth occasion, the mouse was given only one intraperitoneal injection. The total number of cells injected on each occasion was approximately 10^7 cells. Three days after the last immunization, the spleen was removed and spleen cells were suspended in RPMI culture medium. The spleen cells were then fused with P3-x63-Ag8.653 mouse myeloma cells in the presence of polyethylene glycol (PEG) and the cell suspension grown in microtiter wells in selective HAT medium as described by Yeh et al., supra [see, also, Kohler and Milstein, Nature, 256:495-97 (1975) and Eur. J. Immunol., 6:511-19 (1976)]. The mixture was seeded to form low density cultures originating from single fused cells or clones.

The supernatants from these hybridoma cultures were then screened for direct binding activity on the breast cancer cell line, 3396, and a fibroblast cell line obtained from a skin biopsy using an ELISA assay similar to that described by Douillard et al., "Enzyme-Linked Immunosorbent Assay For Screening Monoclonal Antibody Production Using Enzyme-Labeled Second Antibody", Meth. Enzymol., 92:168-74 (1983).

According to this assay, the antigen (with which the antibody being screened for is reactive) is immobilized on microtiter plates and then incubated with hybridoma supernatants. If a supernatant contains the desired antibody, the antibody will bind to the immobilized antigen and is detected by addition of an anti-immunoglobulin antibody-enzyme conjugate and a substrate for the enzyme which leads to a measurable change in optical density. In the present studies, breast cancer cells or control fibroblast cells were dispensed into a 96-well tissue culture plate (Costar Cambridge, MA) and incubated overnight in a humid 37°C incubator (5% CO₂). The cells were then fixed with 100 µl of freshly prepared 1.0% glutaraldehyde to a final well concentration of 0.5% and incubated for 15 min at room temperature, followed by washing three times with 1 X phosphate buffered saline (PBS). The cells were next blocked for 30 min with 5% bovine serum albumin (BSA) in PBS and washed again three times with PBS. The supernatants from the hybridoma cultures were then added at 100 µl/well, the wells incubated for 1 h at room temperature, and the cells washed three times with PBS. Next, goat anti-mouse horseradish peroxidase (Zymed, CA) diluted in 0.1% BSA and PBS was added to a concentration of 100 µl/well. The reaction mixture was incubated for either 1 h at room temperature or 30 min at 37°C and the cells were then washed three times with PBS. o-Phenylenediamine (OPD) was then added at 100 µl/well and

the plates incubated in the dark at room temperature for 5-45 min. Antibody binding to the cells was detected by a color change in the wells that occurred within 10-20 min. The reaction was stopped by adding 100 μ l/well H_2SO_4 and the absorbance read in a Dynatech (Alexandria, VA) Microelisa autoreader at 490 nm.

It should be noted that this assay can be performed using intact cells or purified soluble antigen or cellular extracts as the immobilized antigen. When soluble antigen or cell extracts were used as antigen, the antigen was initially plated at 50 μ l/well in PBS and the plates were incubated overnight at room temperature before beginning the assay. When using intact cells as antigen, they may be used fresh or after fixation. In either case, the cells were initially plated at 10^4 cells in 100 μ l/well in culture medium and incubated overnight in a 37°C incubator (5% CO_2).

Hybridomas which produced antibodies binding to the breast cancer cell line and not to the human fibroblast cells were thus selected, and tested in a FACS cell sorter on peripheral blood leukocytes (PBLs), as described in Example 2, infra. Hybridomas that were negative on PBLs were cloned, expanded in vitro, and further tested for antibody specificity. Those hybridomas producing antibody reactive with human breast cancer were recloned, expanded, and injected into pristane-primed 3-month old BALB/c mice, where they grew as ascites tumors.

Following this procedure, hybridoma cell line BR96 was obtained, cloned and injected into mice to develop as an ascites tumor. As disclosed above, the BR96 hybridoma has been deposited with the ATCC. Monoclonal BR96 antibody was purified from ascites by affinity chromatography on immobilized recombinant

protein A (Repligen, Cambridge, MA). Clarified ascites was diluted with an equal volume of binding buffer (1 M potassium phosphate, pH 8) and applied to a protein A column previously equilibrated with binding buffer. The column was extensively washed with binding buffer and then the antibody was eluted with 50 mM phosphoric acid, pH 3. The purified antibody fraction was neutralized with 1 M Tris, pH 9 and then dialyzed against phosphate buffered saline. Purified BR96 was finally sterile filtered and stored refrigerated or frozen.

EXAMPLE 2

Characterization Of The BR96 Monoclonal Antibody

Isotype Determination

To determine the class of immunoglobulin produced by the BR96 hybridoma, the following techniques were utilized:

(a) Ouchterlony Immunodiffusion

An aliquot of supernatant of the hybridoma cells was placed into the center well of the a 25% agar plate. Monospecific rabbit anti-mouse Ig isotype antibodies (Southern Biotechnology, Birmingham, AL) were placed in the outer wells and the plate was incubated for 24-28 h at room temperature. Precipitation lines were then read.

(b) ELISA Isotyping

Dynatech Immulon 96-well plates were coated with goat anti-mouse Ig antibodies at 1 μ g/ml concentration, 50 μ l/well in PBS and left covered overnight at 4°C. The plates were washed with PBS/Tween 20, 0.05% and blocked with medium at 100 μ l/well for 1 h

at room temperature. After washing the plates, supernatants from the BR96 hybridoma were added and incubated at room temperature for 1 h. After washing with PBS containing 2% bovine serum albumin (BSA), plates were incubated at 37°C for 30 min with monospecific rabbit anti-mouse Ig isotype antibodies coupled to peroxidase (Zymed, South San Francisco, CA). After further washing, the plates were incubated with 1 mg/ml OPD and 0.03% H₂O₂ in 0.1 M citrate buffer, pH 4.5. Optical density at 630 nm was determined on a Dynatec ELISA plate reader.

Based on these procedures, it was determined that the BR96 monoclonal antibody is of the IgG3 isotype.

Characteristics Of The BR96 Monoclonal Antibody

The BR96 antibody shows a high degree of reactivity with a wide range of carcinomas and displays only limited reactivity with normal cells. This was shown by experiments involving immunohistological studies on frozen tissue sections as well as binding studies using intact cultured cells.

Immunohistology

The peroxidase-antiperoxidase (PAP) technique of L.A. Sternberger as described in Immunochemistry, pp. 104-69 (John Wiley & Sons, New York, 1979) and as modified by H.J. Garrigues et al., "Detection Of A Human Melanoma-Associated Antigen, p97, In Histological Sections Of Primary Human Melanomas", Int. J. Cancer, 29:511-15 (1982), was used for the immunohistological studies. The target tissues for these tests were obtained at surgery and frozen within 4 h of removal using isopentane precooled in liquid nitrogen. Tissues were then stored in liquid nitrogen or at -70°C until used.

Frozen sections were prepared, air dried, treated with acetone and dried again [see Garrigues et al., supra]. Sections to be used for histologic evaluation were stained with hematoxylin. To decrease non-specific backgrounds sections were preincubated with normal human serum diluted 1/5 in PBS [see Garrigues et al., supra]. Mouse antibodies, rabbit anti-mouse IgG, and mouse PAP were diluted in a solution of 10% normal human serum and 3% rabbit serum. Rabbit anti-mouse IgG (Sternberger-Meyer Immunochemicals, Inc., Jarettsville, MD), was used at a dilution of 1/50. Mouse PAP complexes (Sternberger-Meyer Immunochemicals, Inc.) containing 2 mg/ml of specifically purified PAP was used at a dilution of 1/80.

The staining procedure consisted of treating serial sections with either specific antibody, i.e., BR96, or a control antibody for 2.5 h, incubating the sections for 30 min at room temperature with rabbit anti-mouse IgG diluted 1/50 and then exposing the sections to mouse PAP complexes diluted 1/80 for 30 min at room temperature. After each treatment with antibody, the slides were washed twice in PBS.

The immunohistochemical reaction was developed by adding freshly prepared 0.5% 3,3'-diaminobenzidine tetrahydrochloride (Sigma Chemical Co., St. Louis, MO) and 0.01% H₂O₂ in 0.05 M Tris buffer, pH 7.6, for 8 min [see Hellstrom et al., J. Immunol., 127:157-60 (1981)]. Further exposure to a 1% OsO₄ solution in distilled water for 20 min intensified the stain. The sections were rinsed with water, dehydrated in alcohol, cleared in xylene, and mounted on slides. Parallel sections were stained with hematoxylin.

The slides were each evaluated under code and coded samples were checked by an independent investigator. Typical slides were photographed by using

differential interference contrast optics (Zeiss-Nomarski). The degree of antibody staining was evaluated as 0 (no reactivity), + (a few weakly positive cells), ++ (at least one third of the cells positive), +++ (most cells positive), ++++ (approximately all cells strongly positive). Because differences between + and 0 staining were less clear cut than between + and ++ staining, a staining graded as ++ or greater was considered "positive". Both neoplastic and stroma cells were observed in tumor samples. The staining recorded is that of the tumor cells because the stroma cells were not stained at all or were stained much more weakly than the tumor cells.

Table 1 below demonstrates the immunohistological staining of various tumor and normal tissue specimens using the BR96 monoclonal antibody. As the table clearly demonstrates, the BR96 antibody reacts with a wide range of human carcinoma specimens, does not react with sarcoma and displays only infrequent reactivity with melanoma. Furthermore, it shows only limited reactivity with any of the large number of normal human tissues tested. The only reactivity detected with normal cells detected was binding to a small subpopulation of cells in the tonsils and in the testis, and to acinar cells in the pancreas, and to epithelial cells of the stomach and esophagus.

TABLE 1

Immunoperoxidase Staining of Human Tumors and Normal
Tissue Specimens with BR96 Monoclonal Antibody

<u>TISSUE TYPE</u>	<u>NUMBER POSITIVE/NUMBER TESTED</u>
<u>Tumors</u>	
Lung carcinoma (non-small cell)	14/17
Breast carcinoma	17/19
Colon carcinoma	15/18
Ovary carcinoma	4/ 4
Endometrial carcinoma	2/ 2
Melanoma	2/ 5
Sarcoma	0/ 5
Stomach carcinoma	2/ 2
Pancreatic carcinoma	2/ 2
Esophagus carcinoma	2/ 2
Cervical carcinoma	2/ 2
<u>Normal Tissues</u>	
Lung	0/ 7
Spleen	0/ 5
Breast	0/ 2
Colon	0/ 7
Kidney	0/ 7
Liver	0/ 5
Brain	0/ 2
Heart	0/ 3
Skin	0/ 2
Thyroid	0/ 2
Adrenal	0/ 1
Ovary	0/ 2
Lymph nodes	0/ 2
Lymphocyte pellet	0/ 4

Table 1 (continued)
Immunoperoxidase Staining of Tumors and Normal
Tissue Specimens with BR96 Monoclonal Antibody

<u>TISSUE TYPE</u>	<u>NUMBER POSITIVE/NUMBER TESTED</u>
Pancreas	2/ 2 (only acinar cells were positive)
Uterus	0/ 7
Retina	0/ 1
Testis	2/ 2 (only small sub-population of cells were positive)
Tonsil	2/ 2 (only small sub population of cells were positive)
Stomach	2/ 2 (epithelial cells positive)
Esophagus	2/ 2 (epithelial cells positive)

The binding of the BR96 antibody to various cultured cell lines was also evaluated. Antibody binding to the cell surface of intact cultured cells was identified either by a direct binding assay with ¹²⁵I-labeled antibody as described in Brown et al., "Quantitative Analysis Of Melanoma-Associated Antigen p97 In Normal And Neoplastic Tissues", Proc. Natl. Acad. Sci. USA, 78:539-43 (1981), or by direct immunofluorescence using a Coulter Epics C fluorescence activated cell sorter (FACS) II [Hellstrom et al., Cancer Res. 46:3917-3923 (1986)].

For binding analyses using a FACS cell sorter, 2 x 10⁵ to 1 x 10⁶ cultured cells were aliquoted in 15% fetal bovine serum (FBS) in IMDM media (Gibco, NY) to a

total volume of 500 μ l /tube. The cells were centrifuged for 1.5 min on a Serofuge and the supernatant removed. 100 μ l of the BR96 monoclonal antibody at 10 μ l/ml was added to each tube, the contents of which was then mixed and incubated on ice for 30 min. The reaction mixture was washed three times with 500 μ l of 15% FBS/IMDM by centrifugation for 1.5 min on the Serofuge (tubes were blotted after the third wash). Then, 50 μ l of optimized FITC-conjugated goat anti-mouse IgG antibody (Tago, Burlingame, CA) diluted 1:25 in 15% FBS/IMDM was added to each tube and the reaction mixture was mixed and incubated for 30 min. The wash step was then repeated and after blotting of the tubes, each pellet was resuspended in 200-500 μ l of PBS. Each sample was run on a Coulter Epics C FACS and the mean fluorescence intensity (MFI) was determined. From the MFI, the linear fluorescent equivalent (LFE) was determined. The LFE of each test sample divided by the LFE of a negative control gave a ratio between the brightness of cells stained by specific versus control antibody. The binding data is shown in Table 2 below.

TABLE 2
FACS Analysis of the Binding of BR96 to
Various Types of Suspended Cells

<u>Cell line</u>		<u>Ratio</u> (10 μ g/ml)
Breast carcinoma	3396	54
Breast carcinoma	MCF-7	38
Breast carcinoma	3630	22
Breast carcinoma	3680	22
Lung carcinoma	2987	15
Lung carcinoma	2707	30
Lung carcinoma	2964	2
Lung carcinoma	3655-3	18
Colon carcinoma	RCA	34
Colon carcinoma	3619	22
Colon carcinoma	3347	5
Colon carcinoma	HCT116	1
Colon carcinoma	CB5	27
Colon carcinoma	C	30
Colon carcinoma	3600	16
Ovary carcinoma	3633-3	11
Melanoma	2669	1
Melanoma	3606	1
Melanoma	3620	1
T cell lymphoma line	CEM	1
T cell lymphoma line	MOLT-4	1
B cell lymphoma line	P3HR1	1
Peripheral blood leukocytes		1

As Table 2 demonstrates, the BR96 monoclonal antibody reacted with breast, lung and colon carcinoma cell lines but did not react with melanoma lines or with

T or B lymphoma lines nor with normal peripheral blood leukocytes. Scatchard analysis using radiolabeled antibody indicated that the approximate association constant (K_d) of BR96 was calculated to be 3.6×10^6 antigen sites/cell for the 3396 line which binds BR96.

These data demonstrate that monoclonal antibody BR96 recognize cell surface antigens abundantly expressed (up to 10^6 molecules/cell) on the majority of human carcinomas.

EXAMPLE 3

Internalization Of The BR96 Monoclonal Antibody Within Carcinoma Cells

Studies were conducted to measure internalization of the BR96 monoclonal antibody within antigen-positive carcinoma cells. According to one procedure, BR96 was conjugated to the ricin A chain toxin to form an immunotoxin, BR96-RA, whose internalization by carcinoma cells was then determined. Uptake of the conjugate by the carcinoma cells was assessed by determining to what extent the tumor cells were killed by ricin A chain.

Conjugation of the antibody to the toxin was carried out as follows: Deglycosylated ricin-A chain (Inland Labs, Austin, TX) [see, also, Blakey et al., Cancer Res., 47:947-952 (1987)] was treated with dithiothreitol (5 mM) prior to gel filtration on G-25 Sephadex using PBS, pH 7.2 as eluant. This was added in a 2:1 molar ratio to the antibody in PBS, the antibody having been previously modified with N-succinimidyl-3-(2-pyridyldithio) propionate (SPDP) (Pierce, Rockford, IL) according to the procedure of Lambert et al., J. Biol. Chem., 260:12035-12041 (1985). Reaction was allowed to

proceed for 12-24 h at room temperature, and the solution was then diluted with 1 volume of H₂O. Removal of unconjugated antibody was achieved using Blue Sepharose CL-6B (Pharmacia, Uppsala, Sweden) [see Knowles et al., Anal. Biochem., 160:440-443 (1987)].

The conjugate and excess ricin-A chain were eluted with high salt (10 x PBS) and subjected to further purification on Sephacryl-300 (Pharmacia) using PBS as eluant. The resulting conjugate was free of unbound monoclonal antibody or ricin A-chain and consisted mostly of 1:1 adducts.

The internalization of BR96-RA by various carcinoma cell lines was then measured using a thymidine uptake inhibition assay. According to this assay, the inhibition of ³H-thymidine incorporation into the DNA of the carcinoma cells (i.e., the inhibition of cell proliferation) is a measure of the cytotoxic effect of BR96-RA on the cells and thus a measure of the internalization of the immunotoxin within the cell.

For the assay, carcinoma cells were plated into a 96-well microtiter plate at 1 x 10⁴ cells/well in 100 μl of IMDM medium with 15% fetal calf serum (FCS). The plates were incubated for 12-18 h at 37°C to let the cells adhere. Then the media was removed. Plates were kept on ice. The BR96-RA immunotoxin (100 μl) was then added in log 10 serial dilutions, starting at 10 μg/ml final concentration down to 0.01 μg/ml. The reaction mixture was incubated for 4 h on ice. The plates were washed and 200 μl/ml media was added and further incubated at 37°C for 18 h. At this point, 50 μl of ³H-thymidine was added at 1 μCi/well and the plates incubated for 6 h at 37°C in a 5% CO₂ incubator. The assay plates were then frozen at -70°C for at least 1 h and thawed in a gel dryer for 15 min. The cells were harvested onto glass fiber filters (Filter Strips, No.

240-1, Cambridge Technology) in plastic scintillation vials using a PHD cell harvester. 3 ml of scintillation counting liquid was added to the vials and the vials were counted on a Beckman LS3891 beta scintillation counter at 1 minute per sample.

Graphs of the percent inhibition of thymidine incorporation vs. immunotoxin concentration for each cell line tested were plotted and are shown in Figures 1-5. In each assay, a control was run. The results of the assay are expressed as a percentage of the ^3H thymidine incorporated by untreated control cells.

Figure 1 depicts the percent inhibition of thymidine incorporation by cells from the 3396 breast carcinoma cell line caused by internalization of BR96-RA. Similar results were obtained with the 2707 lung carcinoma cell line (Figure 2) and C colon carcinoma cell line (see Figure 4). The BR96-RA was not internalized by HCT 116 cell line, a human colon carcinoma cell line that does not bind BR96 (see Figure 3). Figure 5 shows no internalization of BR96-RA on 3347, a colon carcinoma cell line to which BR96 does not bind; BR6-RA, on the other hand, which binds to the 3347 cells, does internalize. This study, therefore, demonstrated not only internalization of the BR96 antibody but the selectivity of the internalization of the BR96 antibody for antigen positive carcinoma cells.

EXAMPLE 4

Cytotoxicity of Unmodified BR96 Monoclonal Antibody

Three types of experiments were performed to follow up on the unexpected observation that monoclonal antibody BR96 appeared to be cytotoxic by itself (i.e., in unmodified state) when tested in a FACS assay. So as to avoid an effect of complement in serum, all sera used

were heat inactivated (56°C for 30 min); in addition, some of the experiments with FACS analysis (as described below) were performed on cells which were grown in serum-free medium and tested in the absence of serum.

First, living suspended cells from a variety of antigen positive carcinoma lines (3396, 2987, 3619) were treated with monoclonal antibody BR96. Cells (5×10^5) were incubated on ice for 30 min with 100 μ l of BR96 or control monoclonal antibody at a concentration of 60, 30, 15, 7.5 and 3.8 μ g/ml in culture medium (IMDM, 15% FBS). After washing the cells twice with culture medium, the cells were suspended in 500 μ l medium and stained by adding the dye propidium iodide which stains dead cells [Krishan, Cell Biol. 66:188 (1975); and Yeh, J. Immunol. Methods, 43:269 (1981)]. Out of a 1 mg/ml stock solution (in 70% alcohol) 5 μ l dye was added to cell samples, incubated on ice for 15 min, washed once and finally suspended in 500 μ l medium. The cells were evaluated on a Coulter Epics C FACS, with dead cells being identified by their red fluorescence. The analysis was done on a two-parameter display with log forward lightscatter in the horizontal and log red fluorescence in the vertical display. Computations of cell size versus cell viability were obtained by applying the Coulter Epics C Quadstat program. Tumor cells which could bind BR96 as well as tumor cells not binding BR96

were studied in parallel. The results are shown in Figure 6. Figure 6 demonstrates that incubation of cells from any of three antigen-positive carcinomas with BR96 rapidly killed them. Untreated or antigen-negative cells were not killed.

Second, tumor cells (3396, 3630, 2987, 3619 and HCT 116) were exposed to BR96 (or the control monoclonal antibody) for 18 h at 37°C in a 96-well microtiter plate

at 3×10^3 cells/well in 150 μ l of IMDM medium containing FBS for 66 h after which 50 μ l of ^3H -thymidine was added at 1 μCi /well and the plate was incubated for another 6 h at 37°C. Subsequently, it was frozen at -70°C for at least 1 h and thawed in a gel dryer for 15 min, and the cells harvested onto glass fiber filters. The tritiated thymidine assay was then performed as described in the preceding example, except that the cells and antibodies were incubated at 37°C. Figure 7 illustrates the results. BR96 caused an inhibition of [^3H]thymidine incorporation into antigen-positive cell lines, and this effect was dose dependent. The antigen-negative cell line HCT116 was not affected by an concentration of BR96.

Third, using a modification of a procedure described by Linsley et al. [Linsley, et al., "Identification and characterization of cellular receptors for growth regulator, Oncostatin M", J. Biol. Chem. 264:4282-4289 (1989)] a growth inhibition assay was performed. Cells from four different cell lines (HCT116, 2987, 3396 and 3630) were seeded (3×10^3) in a volume of 0.1 ml of IMDM with 15% fetal bovine serum (FBS) in 96-well microtiter plates and allowed to attach for 3 h at 37°C. Various concentrations of whole BR96 monoclonal were then added in a volume of 0.1 ml, after which incubation at 37°C was continued for 72 h. Subsequently, the culture medium was removed and the cells were stained by crystal violet (0.1% in 20% methanol) for 30 min. and washed three times with PBS. The bound dye was eluted by the addition of 0.1 ml of a solution of 0.1 M sodium citrate, Ph 4.2, in 50% ethanol. Samples were assayed in triplicate on an ELISA reader measuring the absorbance in the presence of BR96 with the absorbance in untreated samples. The results of this procedure are expressed as percentage inhibition of cell growth. Figure 8 illustrates the results. The results of this assay were

in agreement with those presented above for the thymidine incorporation assay (Figure 7).

EXAMPLE 5

ADCC Activity of BR96 Antibody

Determination of ADCC activity of BR96 monoclonal antibody was performed as described by Hellstrom et al., Proc. Natl. Acad. Sci. (USA) 82:1499-1502 (1985). Briefly, a short-term ^{51}Cr -release test that measures the release of ^{51}Cr as described by Cerrotini et al., Adv. Immunol. 18:67-132 (1974) was used as evidence of tumor-cell lysis (cytotoxicity). Peripheral blood lymphocytes from healthy human subjects were separated on Ficoll-Hypaque [Hellstrom et al., Int. J. Cancer 27:281-285 (1981)] to provide effector cells equal to 5% natural killer cell reactivity against SK-MEL-28 cells; (10^6) cells were labeled by incubation with 100 μCi (1 Ci = 37 Gbq) of ^{51}Cr for 2 h at 37°C , after which they were washed three times and resuspended in medium. The labeled cells were seeded (2×10^4 cells per well in 20 μl) into Microtiter V-bottom plates (Dynatech Laboratories, Alexandria, VA). Purified antibody BR96 (10 $\mu\text{g/ml}$, 1 $\mu\text{g/ml}$, and 0.1 $\mu\text{g/ml}$) was then added, followed by 2×10^5 lymphocytes per well in 100 μl . The mixtures were incubated for 2 to 4 h after which the plates were centrifuged at 400 X g. The supernatants were removed and the radioactivity in 100 μl samples was measured with a gamma-counter. There were two replicates per group; the variation between replicates was less than 10%. Several "criss-cross" experiments were done, in which lung (or colon) carcinoma and melanoma targets were tested in parallel with monoclonal antibody BR96 and with the antimelanoma monoclonal antibody MG-22 [Hellstrom et al., Proc. Natl. Acad. Sci. USA, 82:1499-1502 (1985)] which do not bind to most carcinoma cells. Controls

included the incubation of target cells alone or with either lymphocytes or monoclonal antibody separately.

Spontaneous release was defined as the counts per minute (cpm) released into the medium from target cells exposed to neither antibodies nor lymphocytes, and total release, as the number of counts released from target cells that were osmotically lysed at the end of the assay. Percent cytotoxicity was calculated as:

$$\text{X } 100 \frac{\text{experimental group release} - \text{spontaneous release}}{\text{total release} - \text{spontaneous release}}$$

Effector cells were characterized by assessing their sensitivity to incubation with anti-serum to the Leu-11b surface marker and guinea pig complement, using procedures described by Hellstrom et al., in Monoclonal Antibodies and Cancer Therapy, UCLA Symposia on Molecular and Cellular Biology, New Series, eds. Reisfeld & Sell, Liss, New York, Vol 27, pp. 149-164 (1985), incorporated herein by reference. This was done to measure the expression of the Leu-11b marker, which characterizes natural killer (NK) cells and is expressed by lymphocytes mediating ADCC against human melanoma cells in the presence of monoclonal antibody BR96. The cytotoxicity by effector cells alone ("natural killer effect") was subtracted from the data provided in Figure 9.

The results shown in Figure 9 for an antibody concentration of 10 $\mu\text{g/ml}$ indicate that BR96 mediates ADCC activity if present in sufficient concentrations and if the target cells express sufficient concentrations of the epitope. The ADCC activity can be seen at antibody concentrations lower than those at which the antibody is cytotoxic by itself (usually around 20 $\mu\text{g/ml}$). When antibody BR96 was used alone as a control it produced 0% killing at the concentrations tested and using the ^{51}Cr

assay. ADCC activity was only found with BR96 antibody-binding cell lines. Thus, cells from five different carcinoma lines, which all bound BR96, were killed via ADCC at monoclonal antibody concentrations down to 0.1 $\mu\text{g/ml}$, while cells from a sixth line, 2964, which did not bind BR96, were not killed. The requirement for antibody binding to obtain ADCC was further demonstrated by the fact that both of the two carcinomas which could bind a different antibody, L6 (lines 3619 and 2987), were killed by L6 via ADCC, while the others were not. Under the conditions of the assay, BR96 alone caused the release of only 1% of the label, even when tested at a concentration of 10 $\mu\text{g/ml}$.

EXAMPLE 6

Ability of BR96 to Mediate Complement-Mediated Cytotoxicity (CDC)

Tests to evaluate the ability of monoclonal antibody BR96 to kill tumor cells in the presence of human serum as a source of complement (complement-mediated cytotoxicity) (CDC) were performed similarly to those for the ADCC tests described in Example 5, supra, except that 100 μl of human serum from normal human subjects as the source of complement diluted 1:3 to 1:6 was added per microtest well in place of a suspension of effector cells.

As shown in Figure 10, CDC against cells binding BR96 was seen at an antibody concentration of 0.1-5.0 $\mu\text{g/ml}$, while there was no CDC against the BR96 antigen-negative lines HCT116 and 3347. The 3347 cells could, however, be killed when using the L6 monoclonal antibody, which binds to these cells. Controls were always included in which BR96 was tested in the absence of complement. No killing by BR96 alone was detected by the

⁵¹Cr release assay. These data show that BR96 gave a cytotoxic effect in the presence of human serum at concentrations where it is not cytotoxic by itself. (Control antibody gave no CDC).

EXAMPLE 7

Determination of Reactivity of BR96 to Glycolipids and Glycoproteins

BR96 antibody was tested for reactivity to a variety of immobilized glycolipid antigens having known carbohydrate structures and synthetic glycoproteins (so called "neoglycoproteins") using an ELISA assay in which purified glycolipids and glycoproteins and antibody were used in excess (Dr. John Magnani, Biocarb, Gaithersburg, MD; Lloyd et al., Immunogenetics 17:537-541 (1983)). Glycolipids were dried from methanol in microliter wells at 100 ng/well. Synthetic glycoproteins were coated on the surface of the wells by incubation of glycoprotein diluted to 200 ng in phosphate buffered saline (PBS), at pH 7.4/well. Purified BR96 was assayed at a concentration of 10 µg/ml in 0.01 M Tris-HCl, pH 7.4, containing 1% BSA containing 1% bovine serum albumin and antibodies from ascites were assayed at a dilution of 1:100 in the same buffer. At these high concentrations most binding interactions are readily detected. Absorbance values were calculated as the average of duplicate wells. The results of this analysis are summarized in Figures 11 and 12 showing that BR96 reacted with Le^y antigen.

These findings indicate that BR96 can bind to a variant form of the Lewis Y (Fuc α1-2Galβ1-4(Fuca2-3)GlcNAc. antigen and that fucose α1-3 attached to GlcNAc forms a portion of the Le^y-related epitope recognized by BR96. The high tumor specificity of BR96 and ability to internalize (not previously described for monoclonal

antibodies reactive with Le^y antigens) suggests that the antibody recognizes a complex epitope, a portion of which includes the Le^y antigen.

EXAMPLE 8

Preparation and Characterization of BR96 F(ab')₂ Fragments

Murine BR96 (IgG₃) was purified by Protein A affinity chromatography from murine ascitic fluid. Briefly, delipidated ascites was passed over a column containing a matrix of immobilized Protein A (RepliGen Corp., Cambridge, MA) previously equilibrated with 1 M potassium phosphate, pH 8.0. Following the passage of ascites, the column was washed with equilibration buffer until no further protein was spectrophotometrically detected. The bound BR96 was then eluted from the column using 0.1 M citrate buffer, pH 3.0. Immediately after elution, the eluate was neutralized with 1.0 M Tris buffer, pH 9.0, until the pH was approximately 7.0. The monoclonal antibody was then dialyzed into PBS and concentrated prior to storage or use.

F(ab')₂ fragments were then generated by digesting purified BR96 monoclonal antibody with pepsin according to Lamoy, "Preparation of F(ab')₂ Fragments from Mouse IgG of Various Subclasses", Meth. Enzymol. 121:652-663 (1986). Residual whole antibody and Fc fragments were adsorbed from the reaction mixture by passage over a protein A affinity column. The resulting F(ab')₂ fragment preparations were dialyzed extensively against PBS and sterile filtered.

The BR96 F(ab')₂ fragments preparations were characterized by gel permeation HPLC, SDS-PAGE and by ELISA on the human breast tumor line 3396 (Oncogen, Seattle, WA). Gel permeation HPLC was used to assess the

molecular sizes of the proteins comprising the $F(ab')_2$ preparation. Reproducible chromatograms from different preparations indicated that 75-80% of the protein was $F(ab')_2$. No protein was detected at the positions representing higher molecular weight material, such as whole BR96 or protein aggregates. The remaining 20-25% of the protein eluted at positions corresponding to inactivated pepsin and to other smaller non-protein A-binding digestion products.

Nonreducing and reducing SDS-PAGE was used to examine the denatured molecular sizes and structural arrangement of the proteins in the $F(ab')_2$ preparations. A single major band at the position of $F(ab')_2$ (approximately 100 kdal) was typically observed, with no visible contaminating whole monoclonal antibody band (160 kdal). Lower molecular weight bands (i.e. less than 100 kdal) representing inactivated pepsin and small digestion products were minimal. Under reducing conditions the expected results were obtained with the only major bands occurring as a doublet at approximately 25 kdal representing the light chain and the remaining fragmented portion of the heavy chain. No whole heavy chain band was observed.

Functional (binding) activity of the BR96 $F(ab')_2$ fragments was compared to that of whole BR96 in an ELISA with 3396 cells supplying the antigen. Binding of BR96 whole antibody or $F(ab')_2$ fragments to the cells was detected with an HRP-conjugated goat anti-murine K light chain reagent as shown in Figure 13. On a duplicate plate, binding of whole BR96 was distinguished from binding of $F(ab')_2$ fragments by using HRP-conjugated protein A which binds to the whole antibody but not the $F(ab')_2$ fragments (Figure 14).

These results indicate that BR96 F(ab')₂ (lot R0201-1663-03, lot 2) contained a trace amount of whole BR96 antibody. The level of contaminating whole antibody can be estimated to be approximately 8 trifold dilutions away from the amount of F(ab')₂ present, or about 0.01%. The other F(ab')₂ preparation (lot R9011-1481-48, lot 1) showed no detectable level of contaminating whole BR96, indicating that any effect of BR96 can be explained by binding of the Fab region and not the Fc region.

In summary, the BR96 F(ab')₂ preparations appear to be completely free of contaminating whole BR96 IgG by HPLC and by SDS-PAGE. In only one instance, when a very sensitive ELISA method was used were detectable levels of contaminating whole BR96 antibody found and this represented only approximately 0.01% by weight compared to the amount of F(ab')₂ fragments present.

EXAMPLE 9

Preparation and Characterization of Chimeric BR96 Antibody (ChiBR96)

The murine/human chimeric BR96 antibody of the invention ("ChiBR96") was produced using a two-step homologous recombination protocol as described by Fell et al., in Proc. Natl. Acad. Sci. USA 86:8507-8511 (1989) and in co-pending patent application by Fell and Folger-Bruce, U.S. Serial No. 243,873, filed September 14, 1988, and Serial No. 468,035, filed January 22, 1990, and assigned to the same assignee as the present application; the disclosures of all of these documents are incorporated in their entirety by reference herein.

Human Heavy Chain DNA Transfection

The murine hybridoma cell line BR96, ATCC No. HB10036, obtained as described above was transfected (8 X 10⁶ cells) with hgammal/HC-D (deposited at Agricultural Research Service Culture Collection (NRRL), Peoria, Illinois, NRRL No. B 18599) (Figure 15) by electroporation (Gene Pulser; Biorad Laboratories, Richmond, CA) at 250 V, 960 μ Fd capacitance setting, in isotonic phosphate buffered saline (PBS) and 30 μ g/ml of the purified 6.2 kb XbaI restricted fragment of the vector hgammalHC-D. After 48 hr cells were seeded in 96-well plates at 10⁴ cells/well. Selection for Neo^R was carried out in IMDM medium (GIBCO, Grand Island, NY) containing 10% (vol/vol) fetal bovine serum (FBS) and the antibiotic aminoglycoside G418 (GIBCO) at 2.0 mg/ml.

Detection of Secreted Human IgG (Hu gammal) Antibody by ELISA

Culture supernatants were screened using a sandwich ELISA assay 2 weeks after transfection. Goat anti-human IgG, Fc specific (CALTAG, San Francisco, CA) was used as the capture antibody and goat α human IgG, Fc specific conjugated to horseradish peroxidase HRPO, (CALTAG) was the antibody used to detect bound human IgG. Cells from the HuIgG positive wells were subcloned by dilution and dilution clones were screened by ELISA to detect human IgGgammal by the previously described method. The clones containing human IgGgammal were also screened by ELISA to detect murine IgG3 heavy chain. Goat anti-mouse IgG3 (Southern Biotechnology Assoc., Inc., Birmingham, AL) was used as the capture antibody and goat anti-mouse conjugated to HRPO (Southern Biotechnology Assoc., Inc.) was the antibody used to detect the mouse IgG3.

One of the human IgGgamma1 positive murine IgG3 negative (Hugamma1⁺, MuG3⁻) clones was chosen and designated ChiHBR96. This heavy chain chimeric hybridoma cell line, ChiHBR96 was characterized for antigen specificity on MCF-7 cells and for expression levels by a quantitative ELISA for human IgG expression on MCF7 cells. The cell line ChiHBR96 expressed approximately 20 µg/ml of antigen-specific human IgG antibody.

Light Chain DNA Transfection

The ChiHBR96 hybridoma (8 X 10⁶ cells) was transfected by electroporation as described above but using 30 µg/ml of the human light chain recombination vector pSV₂gpt/C_K (NRRL No. B 18507) containing the human light chain K immunoglobulin sequence shown in Figure 16, linearized with HindIII. After 48 hr cells were seeded in 96-well plates at 10⁴ cells/well. Selection for gpt was carried out in IMDM medium containing 10% (vol/vol) FBS, 15 µg/ml hypoxanthine, 250 µg/ml xanthine and 2.25 µg/ml mycophenolic acid (MA).

Detection of Secreted Human Kappa (Hu K) Antibody by ELISA

Culture supernatants were screened using a sandwich ELISA assay as described above, 2 weeks after transfection. Goat α-human K (CALTAG) was the capture antibody and goat anti-human K HRPO (CALTAG) was the antibody used to detect bound human K. Wells containing human K antibody were subcloned by dilution and the clones were screened by ELISA to detect human K or murine K chain. Goat anti-mouse K (Fisher Scientific, Pittsburgh, PA) was used as the capture antibody and goat anti-mouse K conjugated to HRPO (Fisher Scientific) was the antibody used to detect the presence of the mouse K

chain. One of the human K positive, murine K negative clones (HuK⁺, MuK⁻) was chosen to analyze antigen specificity on MCF-7 cells and for expression levels by a quantitative ELISA for human IgG expression on MCF-7 cells. A cell line that was antigen specific for MCF-7 cells and HuIgG⁺, MuIgG⁻, HuK⁺, MuK⁻ was chosen and designated Chimeric BR96 (Chi-BR96).

The original expression of the heavy and light chain antigen specific chimeric BR96 (Chi-BR96) antibody was approximately 25 µg/ml. Through four sequential rounds of cloning the line in soft agarose with a rabbit α HuIgG antibody overlay to detect cells secreting the highest amount of chimeric antibody [Coffino et al., J. Cell. Physiol. 79:429-440 (1972)], a hybridoma cell line (ChiBR96) was obtained secreting approximately 130 µg/ml of chimeric antibody. Hybridoma ChiBR96 was deposited with the ATCC on May 23, 1990, and there provided with the deposit number, ATCC No. HB 10460.

Binding of ChiBR96

The relative affinity of the ChiBR96 antibody and murine BR96 antibody of the invention for the tumor associated antigen on MCF-7 cells was determined by an ELISA competition binding assay [Hellstrom et al., Cancer Res. 50:2449-2454 (1990)]. Briefly, adherent antigen bearing cell line MCF-7 was plated in a 96-well microtiter dish at 3×10^4 cells/well and allowed to grow to confluency for about 3-4 days. The growth media was discarded and the cells are fixed with 0.5% glutaraldehyde in PBS (Sigma Chemical Co., St. Louis, MO), at 100 µl/well for 30 min. The glutaraldehyde was discarded and the plate was washed gently with PBS three times. The plate was then blocked with binding buffer (0.1% BSA in DMEM) 200 µl/well for 1 hr or was stored indefinitely at -20°C. Binding buffer was discarded and

samples and standards were added to the wells. The plates were covered and incubated overnight at 4°C. Samples and standards were discarded and the plates were washed three times with PBS. HRP-conjugate diluted in 1% horse serum in PBS was added to wells, 100 μ l/well and incubated for 1 hr at 37°C. The ELISA was developed with 3,3',5,5'-tetramethyl-benzidine (TMB) chromagen (Genetic Systems, Seattle, WA) in a citrate buffer. Color development was arrested with 3N H₂SO₄ and the plate was read on a Titertek Microplate reader at 450 nm. This assay determined how well 0.3 μ g/ml of biotinylated ChiBR96 antibody competes with either unlabeled ChiBR96 or unlabeled murine BR96 monoclonal antibody for the antigen. The bound biotinylated ChiBR96 antibody was detected with avidin-HRPO and developed with standard ELISA reagents.

As shown in Figure 17, the overlap of the two binding curves indicates that the two antibodies have the same specificity and relative affinity for the tumor antigen.

EXAMPLE 10

Characterization of the ChiBR96 Antibody and BR96 F(ab')₂ Fragments

Cytotoxicity of Unmodified ChiBR96 and BR96 F(ab')₂ Fragments

Living suspended cells from the BR96 antigen positive carcinoma lines 3396, 2987 and MCF-7, were treated with ChiBR96 and BR96 F(ab')₂ fragments prepared as described in Examples 8 and 9, above, to determine cytotoxicity of these antibodies as compared to the BR96 monoclonal antibody of the invention. The cytotoxicity tests were performed by FACS assay as described above in

Example 4. The results of these experiments are shown in Figures 18-20 as percentage dead cells vs. antibody concentration in $\mu\text{g/ml}$.

Figure 18 and 20 show that the chimeric BR96 antibody and F(ab')_2 fragments of BR96 IgG3 are similar to BR96 monoclonal antibody with respect to cytotoxicity to 3396 and MCF-7 cells. Figure 19 demonstrates that the cytotoxic effect on 2987 cells is much lower than on the other breast carcinoma cells (Figures 18 and 20). These results suggest that a higher binding ratio (Table 2) is important for killing by these antibodies and/or that different tumor cells might have different sensitivity to killing by these antibodies. These results illustrate that the ChiBR96 antibody and the F(ab')_2 fragments are cytotoxic by themselves, i.e. in unconjugated form, and also illustrate that the cytotoxicity of the BR96 antibodies is not dependent on the Fc region.

Internalization of ChiBR96

The internalization of the ChiBR96 antibody within carcinoma cells was evaluated in comparison to internalization of the BR96 monoclonal antibody. The antibodies were conjugated to ricin A chain toxin to form immunotoxins ChiBR96-RA (1-4 Ricin A chains per antibody molecule) and BR96-RA (1-2 Ricin A chains per antibody molecule) and internalization by carcinoma cell lines 3396 and 3630 was measured using a thymidine uptake inhibition assay, as described in Example 3, above.

Graphs of the percent inhibition of thymidine incorporation vs. immunotoxin concentration for each cell line tested are shown in Figures 21 and 22. Figure 21 depicts the percent inhibition of thymidine incorporation by cells from the 3396 breast carcinoma cell line caused by internalization of ChiBR96-RA and BR96-RA. As shown

in the graph, ChiBR96 is internalized similarly to BR96, and appears to be at least as efficient as BR96 at killing tumor cells. Similar results were obtained with the 3630 breast carcinoma cell line (Figure 22).

ADCC Activity of ChiBR96 Antibody

Determination of ADCC activity of ChiBR96 was conducted as described in Example 5, above using the following cell lines: breast cancer lines 3396, 3630 and 3680 (Oncogen, Seattle, WA) and MCF-7 (ATCC No. HTB22); ovarian cancer line 3633-3 (Oncogen, Seattle, WA); and lung cancer lines 2987; 3655-3 and 2981 (Oncogen, Seattle, WA). The results are shown in Table 3 for various antibody concentrations.

TABLE 3
ADCC Activity of ChiBR96

<u>Cell</u> <u>Lines</u>	<u>Antibody</u>	<u>NK</u>	<u>Antibody</u> <u>Concentration (μg/ml)</u>				
			<u>10</u>	<u>1</u>	<u>0.1</u>	<u>0.01</u>	<u>0.01</u>
Breast Cancer 3396	BR96	28	86	74	58	27	25
	ChiBR96		88	79	60	34	26
MCF-7	BR96	16	82	69	54	17	15
	ChiBR96		90	82	57	25	17
MCF-7	BR96	22	73	69	48	22	22
	ChiBR96		76	70	57	33	26
3630	BR96	30	69	64	42	30	34
	ChiBR96		69	56	42	36	36
3680	BR96	13	73	67	58	34	38
	ChiBR96		70	71	61	39	30
Ovarian Cancer 3633-3	BR96	20	92	90	64	28	23
	ChiBR96		88	88	54	43	29
Lung Cancer 2987	BR96	11	51	57	41	9	7
	ChiBR96		69	65	51	28	15
3655-3	BR96	4	49	37	0	0	0
	ChiBR96		39	35	12	6	5
2981	BR96	3	4	3	3	4	5
	ChiBR96		5	4	3	4	4

The results shown in Table 3 for various antibody concentrations indicate that ChiBR96 mediates ADCC activity to a similar extent as BR96. The ADCC activity can be seen at antibody concentrations lower than those at which the ChiBR96 antibody is cytotoxic by itself. When antibody BR96 was used alone as a control it produced 0% killing at the concentrations tested. ADCC activity was only found with the BR96 antibody-binding cell lines.

Ability of ChiBR96 to Mediate Complement-Mediated Cytotoxicity

Determination of the ability of ChiBR96 to kill tumor cells in the presence of human serum as a source of complement (CDC) were performed as described in Example 6, using breast cell lines 3396; MCF-7, 3630 and 3680; ovarian cancer cell line 3633-3; and lung cancer cell lines 3655-3, 2987 and 2981. Table 4 presents the results.

TABLE 4
CDC Activity of ChiBR96

Antibody Concentration ($\mu\text{g/ml}$)		10	1	0.1	0.01
Cell Lines	Antibody				
Breast Cancer					
3396	BR96	100	99	78	13
	ChiBR96	86	92	13	2
MCF-7	BR96	94	100	63	2
	ChiBR96	92	83	1	0
3630	BR96	94	100	82	9
	ChiBR96	86	86	33	9
3680	BR96	100	100	19	7
	ChiBR96	87	100	5	9
Ovarian Cancer					
3633-3	BR96	98	98	21	0
	ChiBR96	100	100	26	1
Lung Cancer					
3655-3	BR96	91	22	0	0
	ChiBR96	46	3	0	0
2987	BR96	100	100	1	0
	ChiBR96	100	43	0	0
2981	BR96	0	3	3	2
	ChiBR96	1	1	2	10

As shown in Table 4, ChiBR96 gave a cytotoxic effect (CDC) similar to that of BR96, in the presence of human serum containing complement. BR96 and ChiBR96 were not cytotoxic in any concentration. Human serum was also not cytotoxic.

The above results demonstrate that the whole BR96 antibody and chimeric antibody of the invention are internalized within carcinoma cells to which they bind, are cytotoxic alone in unmodified form and have ADCC and CDC activity for cells expressing a higher amount of epitopes.

EXAMPLE 11

Evaluation of BR96 Antibodies In Vivo

The therapeutic potential of the unmodified BR96 antibody of the invention for treatment of tumors was examined in a series of experiments using human tumor xenografts in nude mice. In addition, certain parameters were examined that might influence the efficacy of BR96 as an antitumor agent. These parameters include level of antigen expression on the target tumor line, time from tumor implantation to initiation of therapy and effects of dose.

In all the in vivo experiments, the required number of Balb/c nu/nu mice (Harlan Sprague Dawley, Indianapolis, IN) were implanted with either the human lung adenocarcinoma cell line H2987 or H2707 tumor line. Cells from these tumor lines were grown in vitro, harvested, washed and resuspended in PBS prior to subcutaneous (s.c.) implantation of 10 million cells into the rear flank of each mouse. These groups of mice were then randomized and separated into smaller equal groups of 8 or 10 mice each.

To increase the chance of observing any antitumor effects of BR96 while still requiring the antibody to actually localize to the tumor implant site for any effect to occur, therapy was initiated 24 hours after tumor implantation on day 2. Both the BR96 and control MAbs were administered at the same dose and schedule, although initiation of therapy in some cases varied. The treatment dose was administered in 0.2 ml PBS intravenously (i.v.) through the tail vein of the mouse. Normally the schedule was once every three days for five injections (Q3DX5). However, two extra injections were given on days 19 and 21 after H2987 tumor implantation in the initial experiment.

Antitumor Effects of BR96 Antibody in 2987 and 2707

Tumors

Tumor volumes were determined for each animal weekly with measurement usually beginning on the eighth day after implantation. Tumor volumes were calculated from the measurements of tumor length and perpendicular width using the formula:

Tumor Volume = longest length X (perpendicular width squared/2)

Group mean values were then calculated and plotted against time after tumor implantation.

In the initial experiment depicted in Figure 23 treatment with BR96 resulted in highly significant anti-tumor effects against the H2987 cell line. BR64, which also binds and is internalized by these cells, was used as a negative control, and showed little if any effect compared to the PBS treated controls.

Table 5 summarizes the effects on the individual tumors at the end of treatment in this first experiment.

TABLE 5
Effects of Treatment with Unmodified BR96 Initiated
At Different Times After H2987 Implantation

EXPERIMENT 1
DAY 28

GROUP	Mab	TUMOR RESPONSE			
		COMPLETE	PARTIAL	STABLE	PROGRESSION
1	BR96	2	0	3	5
2	BR64	0	0	1	9
3	PBS	0	0	0	10

Only treatment with BR96 antibody resulted in complete absence of tumor. Two animals in this group were tumor free and an additional 3 animals showed cessation of growth of their tumors following treatment with BR96 antibody. The two mice showing no signs of tumor remained tumor free throughout the course of the experiment.

Antitumor Effects of BR96 Antibody on Established Tumors

One of the ultimate goals of tumor therapy is the effective treatment of established and growing tumors. To examine whether BR96 could have an antitumor effect on established tumors the H2987 or H2707 lung adenocarcinoma tumor lines were used as xenografts in nude mice. Because both of these tumor lines result in palpable tumors eight days after administration of 10 million cells s.c., delaying initiation of treatment provided a method to examine antitumor effects on established tumors.

Therefore, to further examine the efficacy of unmodified BR96, several experiments were performed where treatment was withheld for either 5 or 8 days following s.c. tumor implantation. The delay in treatment initiation allowed the tumor cells to become established tumors. This results in an animal model that is more difficult to treat but resembles the clinical situation in a more realistic manner.

The treatment protocol is summarized in Table 6. Three groups of 10 mice each were treated with BR96 antibody initiated at different times as described in this Table. Control mice received either FA6 or PBS beginning on DAY 2. FA6 is a murine IgG₃ directed against a bacterial antigen not found in mammalian species, and acted as an isotype matched nonbinding negative control monoclonal antibody.

TABLE 6
Effects of Treatment With Unmodified BR96
Initiated at Different Times After H2987 or
H2707 Implantation

TREATMENT PROTOCOL

<u>GROUP</u>	<u>MAb</u>	<u>SCHEDULE/ROUTE</u>	<u>DOSE</u>	<u>DAYS INJECTED</u>
1	BR96	Q3DX5 i.v.	1 mg	2, 5, 8, 11, 14
2	BR96	Q3DX5 i.v.	1 mg	5, 8, 11, 14, 17
3	BR96	Q3DX5 i.v.	1 mg	8, 11, 14, 17, 20
4	FA6	Q3DX5 i.v.	1 mg	2, 5, 8, 11, 14
5	PBS	Q3DX5 i.v.	0.2 ml	2, 5, 8, 11, 14

The results of this treatment protocol for both H2987 and H2707 tumor cell lines are shown in Figure 24, where the number of animals without tumors versus when initiation of treatment after tumor implantation occurred are plotted. Absence of tumor, as defined by the absence

of a palpable tumor, was assessed at the end of treatment for each group. The day used for the determination of tumor absence varied since treatment was initiated at different times post tumor implant. Early initiation of treatment was clearly more effective and efficacy decreases as onset of treatment increased from time of tumor implant. Since delay in initiation of treatment allows greater growth and establishment of the tumor, decreased efficacy at later treatment initiation times reflects the increasing difficulty of treating larger and more established tumors.

These results demonstrate that BR96 has antitumor effects against two different tumor cell lines. Antitumor effects were only observed in the three groups treated with BR96 antibody while those animals treated with either the control FA6 or PBS showed no antitumor effects.

It is significant that the differences in efficacy with more established tumors are greater with the higher antigen expressing tumor line, H2707. The observation that H2707 has a greater response to BR96 therapy than H2987 is consistent with the assumption that the amount of antigen expressed by a tumor cell may influence the efficacy of BR96 treatment. From the data above it is clear that BR96 has antitumor effects against staged tumors.

Dose Effects of BR96 Antibody

In another experiment, the dose effects of BR96 against the H2707 tumor line was examined. In this experiment, BR96 was administered in decreasing half log amounts from 1 mg/dose to 0.032 mg/dose. The mean tumor volumes versus time post tumor implant of the groups are presented in Figure 25. The control treated animals were

given only the highest dose of monoclonal antibody, 1 mg/dose FA6. These control animals showed no antitumor effects while there was a dose dependent response when BR96 antibody was administered over the chosen dose range.

Antitumor Effects of F(ab')₂ Fragment and Chimeric BR96

In addition, antitumor effects of the F(ab')₂ BR96 fragment were examined to determine if the antitumor effects seen in vivo were due to the Fc portion or if actual binding to the tumor with its subsequent internalization was sufficient for the cell death, as indicated by in vitro assays. The dose of F(ab')₂ fragment was 0.66 mg/dose using the same schedule as the whole BR96. This dose corresponds to an approximate molar equivalent of binding regions compared to the 1.0 mg/dose whole IgG₃ BR96. Mean tumor volume values versus time post tumor implantation for this group treated with the antibody fragment are shown in Figure 26. There were clearly some antitumor effects although the effects were not as strong as with whole antibody. These effects were most pronounced at the earlier time points during and immediately following treatment.

Chimeric BR96 was also examined for antitumor effects in this experiment. An intermediate dose of 0.32 mg/dose for the chimeric Mab was chosen. The mean tumor volume values for this group of mice is also shown in Figure 26. Treatment with chimeric antibody BR96 was more efficacious than a comparable dose of the murine BR96 IgG₃. This is further demonstrated in Figure 27 which shows that 6 of the 8 mice treated with chimeric BR96 were free of palpable tumors at the end of treatment.

Examination of the individual tumors depicted in Figure 27 shows that at completion of treatment a clear dose effect was evident by the number of animals without tumors after treatment with decreasing amounts of whole IgG3 BR96 antibody from 1.0 to 0.1 mg/dose. Surprisingly, treatment with 0.032 mg/dose resulted in an antitumor effect similar to the 0.32 mg/dose. This may reflect that the level of cells killed in the tumor from the treatment was very close to the minimum amount necessary for the tumor to continue to grow.

Three of the eight animals treated with the $F(ab')_2$ fragment were free of palpable tumors after treatment. Therefore the Fc portion is not entirely necessary for the antibody to have antitumor effects in vivo although it should enhance the tumoricidal properties of BR96, particularly in immunocompetent animals.

The above demonstrates that unmodified BR96 antibodies are effective antitumor agents against tumor lines in vivo. Moreover, the BR96 antibodies have an effect on staged or established growing tumors. There is an indication that higher antigen density on the tumor line may increase the ability of BR96 to kill these cells. It has been shown that any of the forms of the monoclonal antibody, i.e., chimeric, murine whole IgG₃ or $F(ab')_2$ fragments, are effective as antitumor agents. Earlier treatment and higher doses are preferred.

EXAMPLE 12

Localization and Biodistribution of BR96 Antibodies

Radiiodinated BR96 monoclonal antibodies administered at doses used in the therapy experiments described above in Example 11, were used to determine biodistribution characteristics. Specifically, the whole

IgG₃, BR96, chimeric or F(ab')₂ fragments together with the appropriate control (whole monoclonal antibody FA6, chimeric 96.5 and 96.5 F(ab')₂, respectively) were used to localize in the tumor and various other organs.

Prior to the localization experiments, animals were injected with tumor cells as described above in Example 11, for the therapy studies. However, the tumors were allowed to grow in the animals for approximately 2 weeks. At this time, 100 µg of BR96 antibody or fragment was radiolabeled with ¹²⁵I using 10 µg Iodogen for 10 minutes at room temperature as directed by the manufacturer. Control antibody or fragments were labeled with ¹³¹I using the same method. These radioiodinated antibodies were diluted with the appropriate unlabeled antibodies to reach the doses used in the therapy experiments. Both the specific and nonspecific antibodies were then mixed and administered together, i.v., through the tail vein of the mouse. At selected times mice were randomly pulled from the group, anesthetized, bled through the orbital plexus and sacrificed. Various tissues were removed, weighed and counted on a gamma counter capable of differentiating between the two radioisotopes of iodine. From this data, percent injected dose and percent injected dose per gram were calculated.

The accumulated data from the 24 post administration time point in the localization experiments are summarized in Table 7.

TABLE 7
Summary of Biodistribution Experiments

		% INJECTED DOSE/GRAM							
		<u>24 HRS. POST ADMINISTRATION</u>							
	<u>ANTIBODY</u>	<u>DOSE</u> <u>(mg)</u>	<u>TUMOR</u> <u>CELL LINE</u>	<u>BLOOD</u>	<u>TUMOR</u>	<u>LIVER</u>	<u>SPLEEN</u>	<u>KIDNEY</u>	<u>LUNG</u>
1)	BR96-G ₁	1.0	H2987	10.2	6.8	2.2	1.9	3.4	4.7
	FA6	1.0		6.3	2.1	2.1	1.6	2.4	3.2
2)	BR96-G ₁	0.3	H2707	9.0	7.0	1.8	1.6	2.7	3.7
	FA6	0.3		5.9	2.7	2.0	1.8	2.2	2.8
3)	ChiBR96	0.32	H2707	7.2	8.2	1.4	1.6	2.0	3.5
	Chi96.5	0.32		7.5	2.3	1.8	1.6	1.9	3.5
4)	F(ab') ₂								
	BR96	0.65	H2707	<0.3	<0.3	<0.3	<0.3	<0.3	<0.3
	96.5	0.65		<0.3	<0.3	<0.3	<0.3	<0.3	<0.3

The only tissue showing significant differences between specific and nonspecific antibody is the tumor. All other tissues examined show approximately equal uptake between the specific and nonspecific antibodies. One possible exception is the lower blood levels for the nonspecific antibody, FA6. This indicates accelerated blood clearance of this antibody. However, the difference between the specific and nonspecific antibody in the tumor is greater than the difference in blood levels between the FA6 and BR96 antibodies.

The data in Table 7 also demonstrate that the percent of the dose present in a particular organ is constant regardless of the dose administered. This would therefore indicate there is quantitatively more antibody present at the tumor site when higher doses are administered. In addition, there are no apparent differences between the two tumor lines with respect to specific vs nonspecific uptake.

Table 7 also demonstrates that the $F(ab')_2$ was cleared from the animal at a much faster rate than either the IgG_3 or chimeric BR96. This could explain the reduction in efficacy of the fragment compared to the whole antibody therapy experiments. Any antitumor effects from the fragment must therefore be rapid and occur during the short time span prior to being cleared.

ChiBR96 localized at a comparable level to the IgG_3 BR96. Higher amounts were present only in the tumor compared to the control chimeric antibody. This suggests that any increase in efficacy of the chimeric antibody compared to the murine BR96 IgG_3 is due to the human constant region substitution. Of equal importance, the human constant region substitution does not appear to effect the ability of the chimeric antibody to localize to the tumor or adversely affect its biodistribution.

In summary, the IgG_3 and chimeric forms of BR96 are capable of specifically localizing to the tumor site.

Moreover, both localization and therapeutic effects have been shown in these preliminary experiments at comparable doses. Indirect evidence of localization of the $F(ab')_2$ fragments was shown by the antitumor activity of the fragments in the therapy experiments. This activity must occur before 24 hours.

While we have presented particular embodiments of this invention herein, it is apparent that variations and modifications can be effected within the scope of the invention. Therefore, it will be appreciated that the scope of this invention is to be defined by the claims appended hereto rather than by the specific embodiments which have been presented herein by way of example.

CLAIMS

We claim:

1. An antibody or fragment thereof that has specific immunological reactivity with human carcinoma cells, said antibody characterized by internalization within the carcinoma cells with which it reacts, mediation of ADCC and CDC activity, and killing of said human carcinoma cells in the absence of host effector cells or complement.
2. The antibody of claim 1, wherein the antibody is a murine monoclonal antibody.
3. Murine monoclonal antibody BR96 produced by the hybridoma having the identifying characteristics of HB 10036 as deposited with the ATCC.
4. Hybridoma HB 10036 as deposited with the ATCC.
5. A recombinant protein comprising the antigen-binding region of the monoclonal antibody of claim 2.
6. The recombinant protein of claim 5, wherein the protein is a human/murine chimeric antibody.
7. Chimeric antibody ChiBR96 produced by the hybridoma having the identifying characteristics of HB 10460 as deposited with the ATCC.
8. Hybridoma HB 10460 as deposited with the ATCC.
9. The recombinant protein of claim 5, wherein the antigen-binding region is joined to at least a functionally active portion of a second protein having anti-tumor activity.

10. The recombinant protein of claim 9, wherein the second protein is an enzyme, lymphokine, oncostatin or toxin.
11. The recombinant protein of claim 5, wherein the antigen-binding region reacts with an antigen that is a variant of Le^y antigen including an epitope containing fucose α 1-3.
12. An Fab, F(ab')₂ or Fv fragment of the antibody of claim 2.
13. A bispecific antibody with a binding specificity for two different antigens, one of the antigens being that with which the monoclonal antibody of claim 2 binds.
14. The bispecific antibody of claim 13, wherein one of the antigens is a variant of Le^y antigen including an epitope containing fucose α 1-3.
15. A monoclonal antibody, the antigen-binding region of which competitively inhibits the immunospecific binding of monoclonal antibody BR96 produced by hybridoma HB 10036 to its target antigen.
16. The antibody of claim 15 wherein said antigen is a variant of Le^y antigen including an epitope containing fucose α 1-3.
17. A human/murine recombinant antibody, the antigen-binding region of which competitively inhibits the immunospecific binding of monoclonal antibody BR96 produced by hybridoma HB 10036 to its target antigen.
18. The antibody of claim 3 or 7 wherein the antibody is conjugated to a therapeutic agent to form an antibody conjugate.

19. The antibody of claim 18 wherein the therapeutic agent is an anti-tumor drug, a toxin, a radioactive agent, a second antibody or an enzyme.
20. A combination of an immunoconjugate comprising the antibody of claim 3 or 7 linked to an enzyme capable of converting a prodrug into a cytotoxic drug, and said prodrug.
21. A pharmaceutical composition useful in the treatment of human carcinomas comprising a pharmaceutically effective amount of the antibody of claim 3 or 7.
22. A pharmaceutical composition useful in the treatment of human carcinomas comprising a pharmaceutically effective amount of at least one antibody conjugate according to claim 18.
23. A pharmaceutical composition useful in the treatment of human carcinomas comprising a pharmaceutically effective amount of at least one recombinant protein according to claim 9.
24. A method of treating human carcinomas in vivo comprising administering to a patient a pharmaceutically effective amount of a composition containing the antibody of claim 3 or 7.
25. A method for determining the presence of carcinoma in human tissue comprising contacting a specimen of said tissue with the antibody of claim 3 or 7 and detecting the binding of said antibody to said tissue.
26. The method of claim 25 wherein said antibody is labeled so as to produce a detectable signal with a label selected from the group consisting of a radiolabel, an enzyme, a chromophore and a fluorescer.

27. A method for imaging human carcinoma comprising administering to a patient the antibody of claim 3 or 7 in an amount effective for detection of the antibody intravenously, allowing the antibody to localize to the site of carcinoma cells and detecting said antibody.

28. The method of claim 27 wherein said antibody is labeled so as to produce a detectable signal with a label selected from the group consisting of a radiolabel, an enzyme, a chromophore, and a fluorescer.

29. A monoclonal anti-idiotypic antibody reactive with an idiootype on the antibody of claim 3.

30. A diagnostic kit comprising:

- a) the antibody of claim 3 or 7; and
- b) a conjugate of a detectable label and a specific binding partner of the antibody of (a) above.

31. The diagnostic kit of claim 30 wherein the label is selected from the group consisting of enzymes, radiolabels, chromophores and fluorescers.

1/27

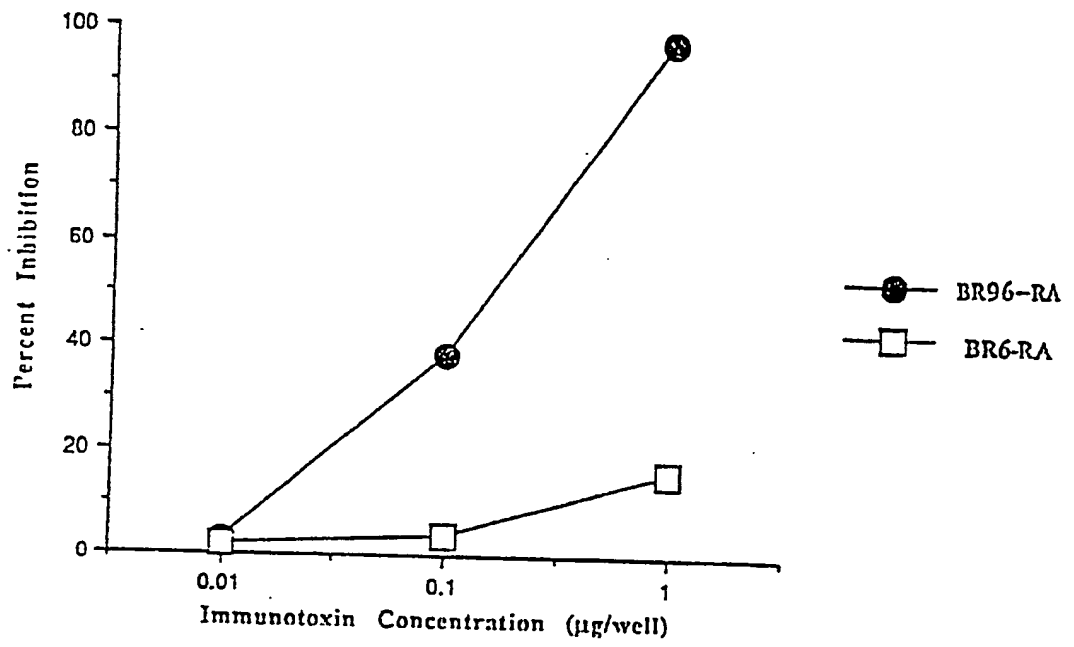


FIGURE 1

2/27

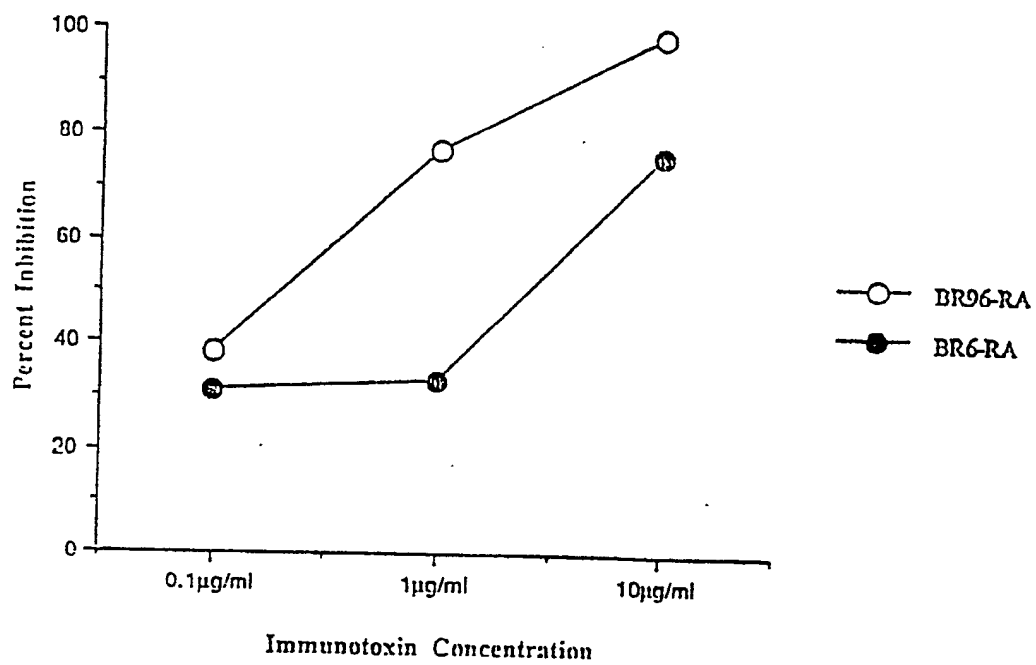


FIGURE 2

HELLSTROM et al

3/27

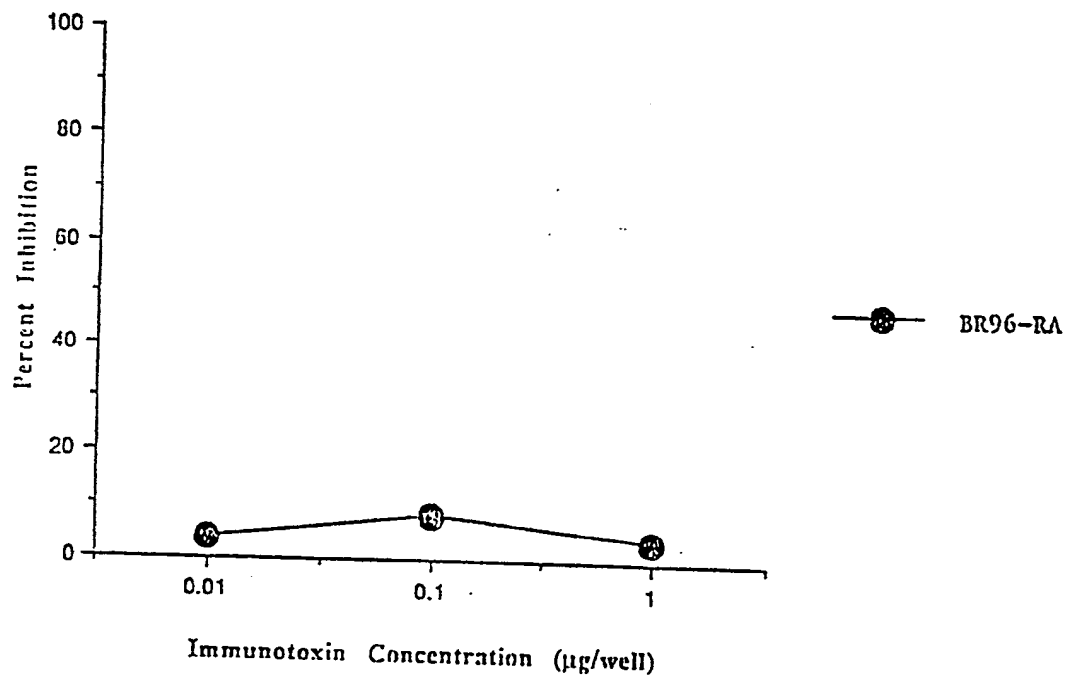


FIGURE 3

HELLSTROM et al.

4/27

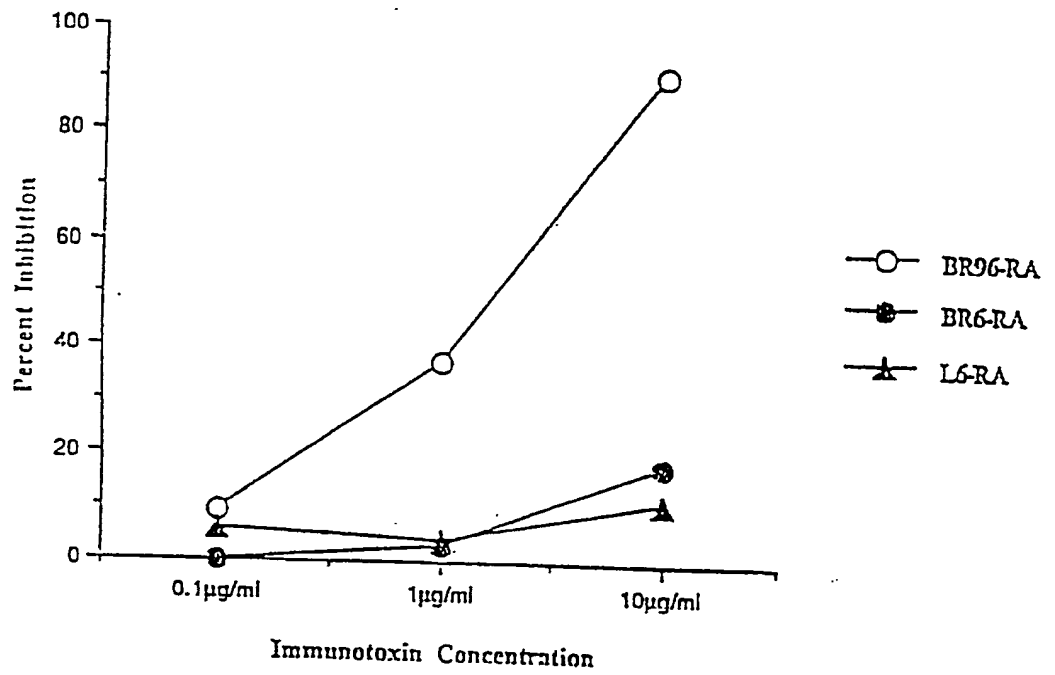


FIGURE 4

5/27

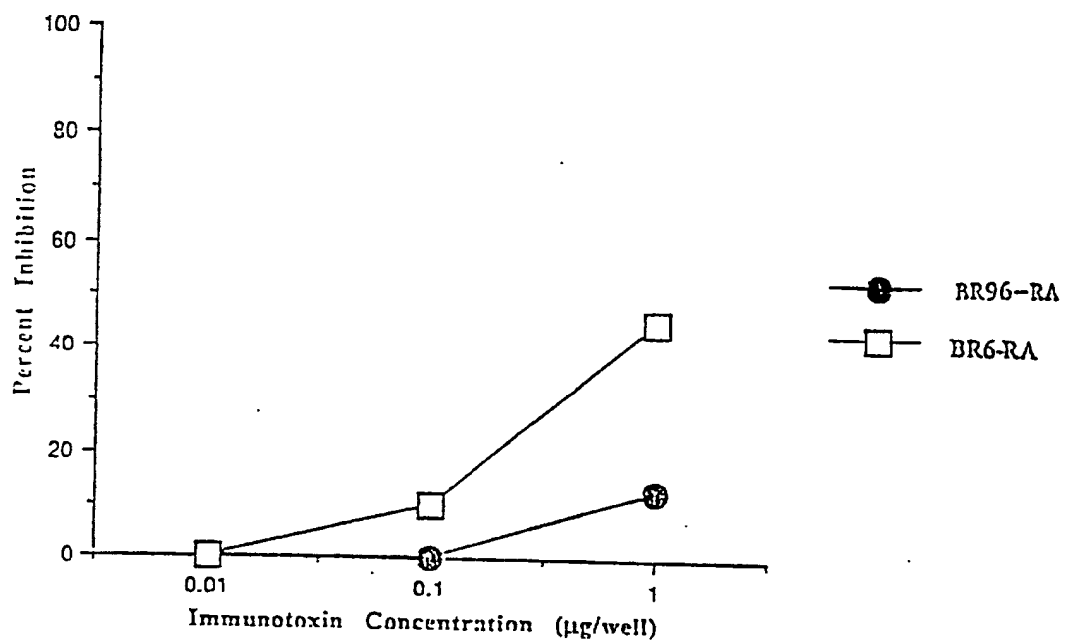


FIGURE 5

6/27

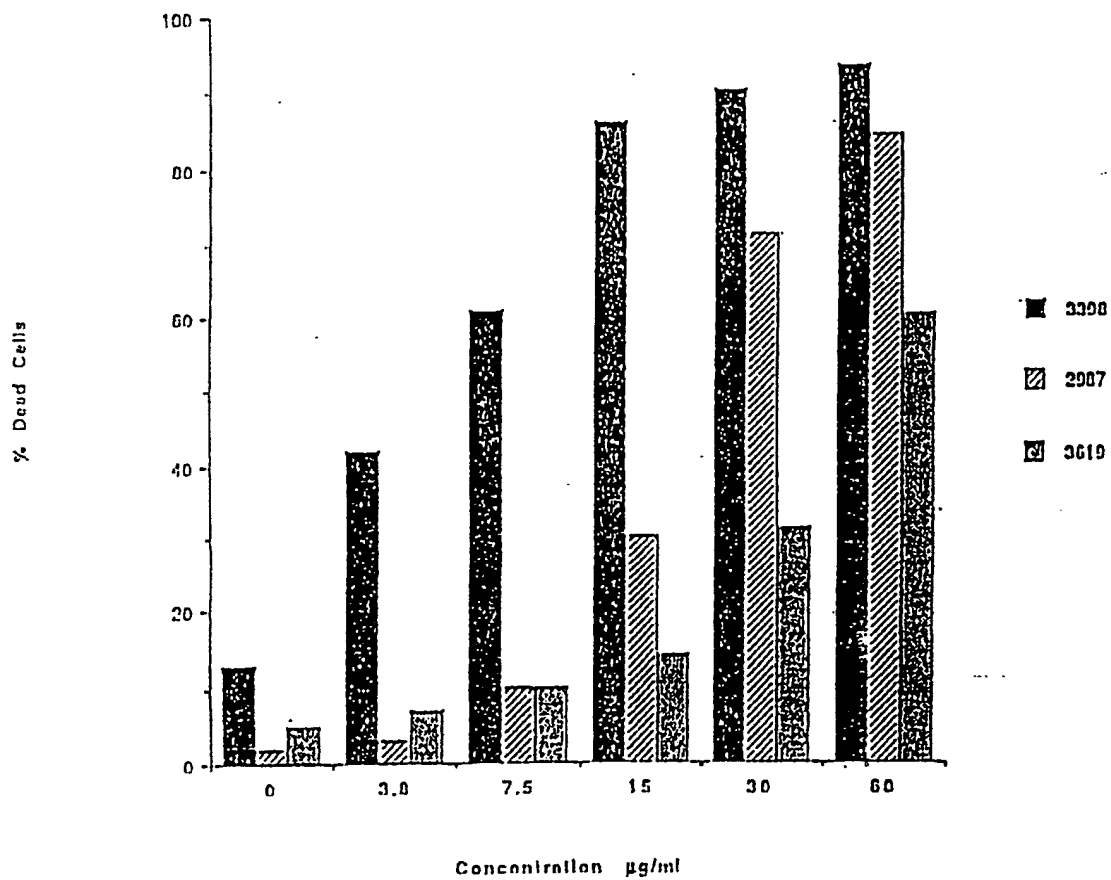


FIGURE 6

7/27

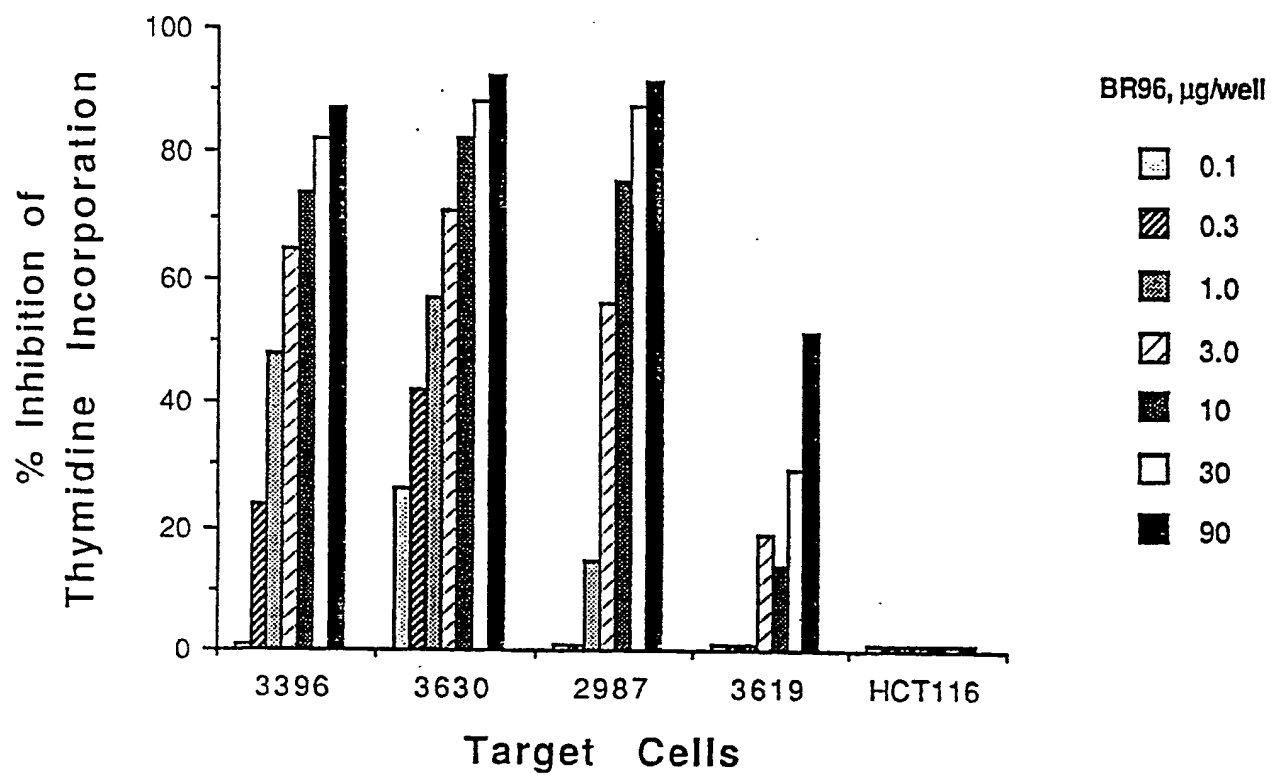


FIGURE 7

8/27

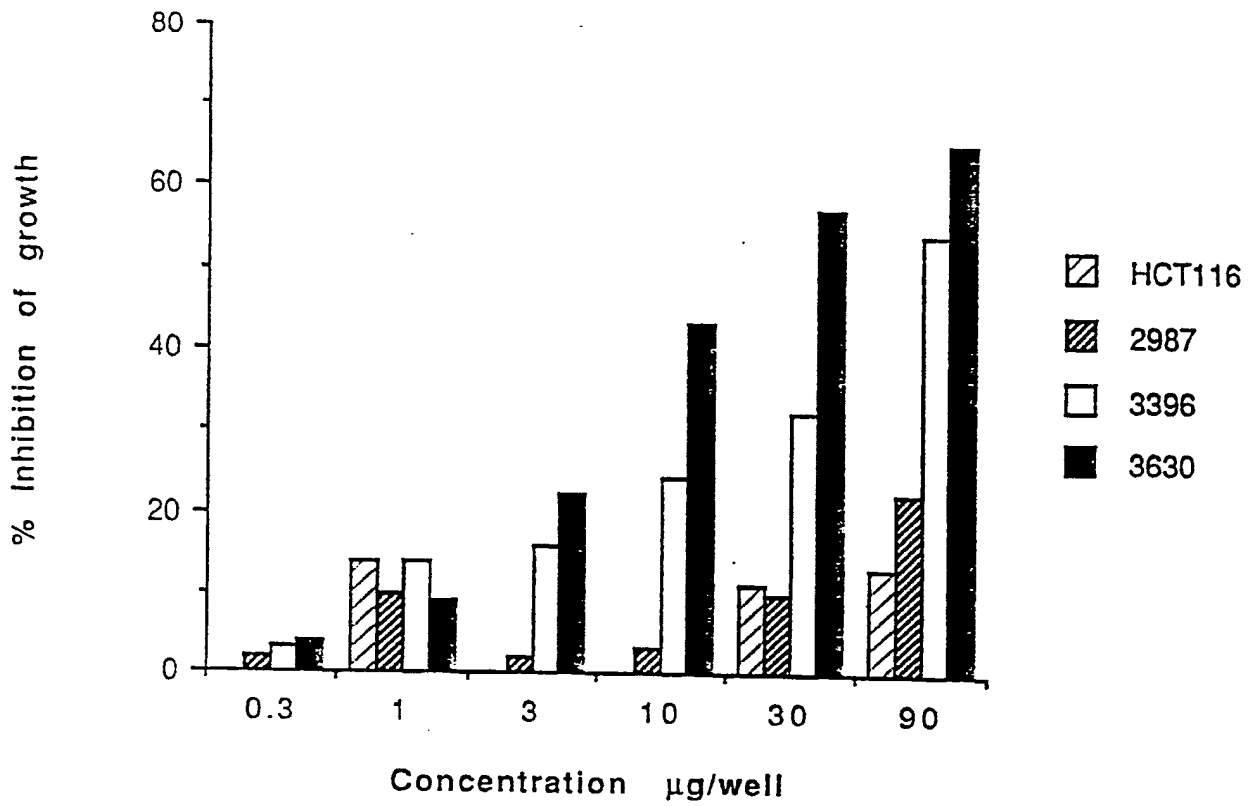


FIGURE 8

9/27

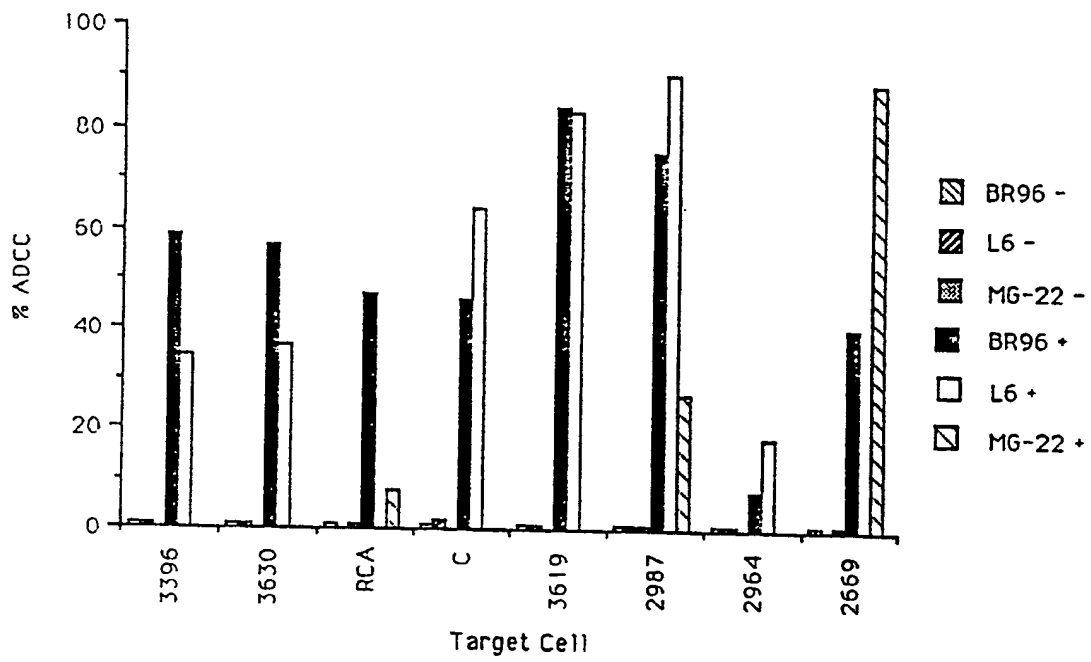


FIGURE 9

10/27

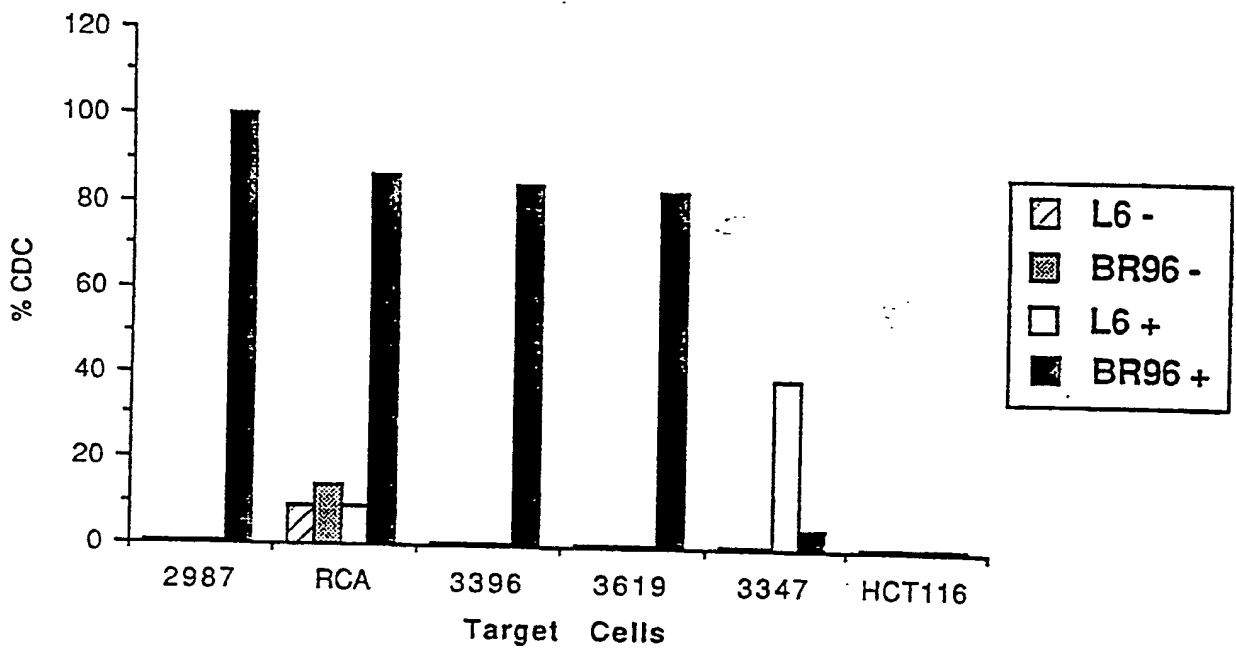


FIGURE 10

11/27

Absorbance at 450nm

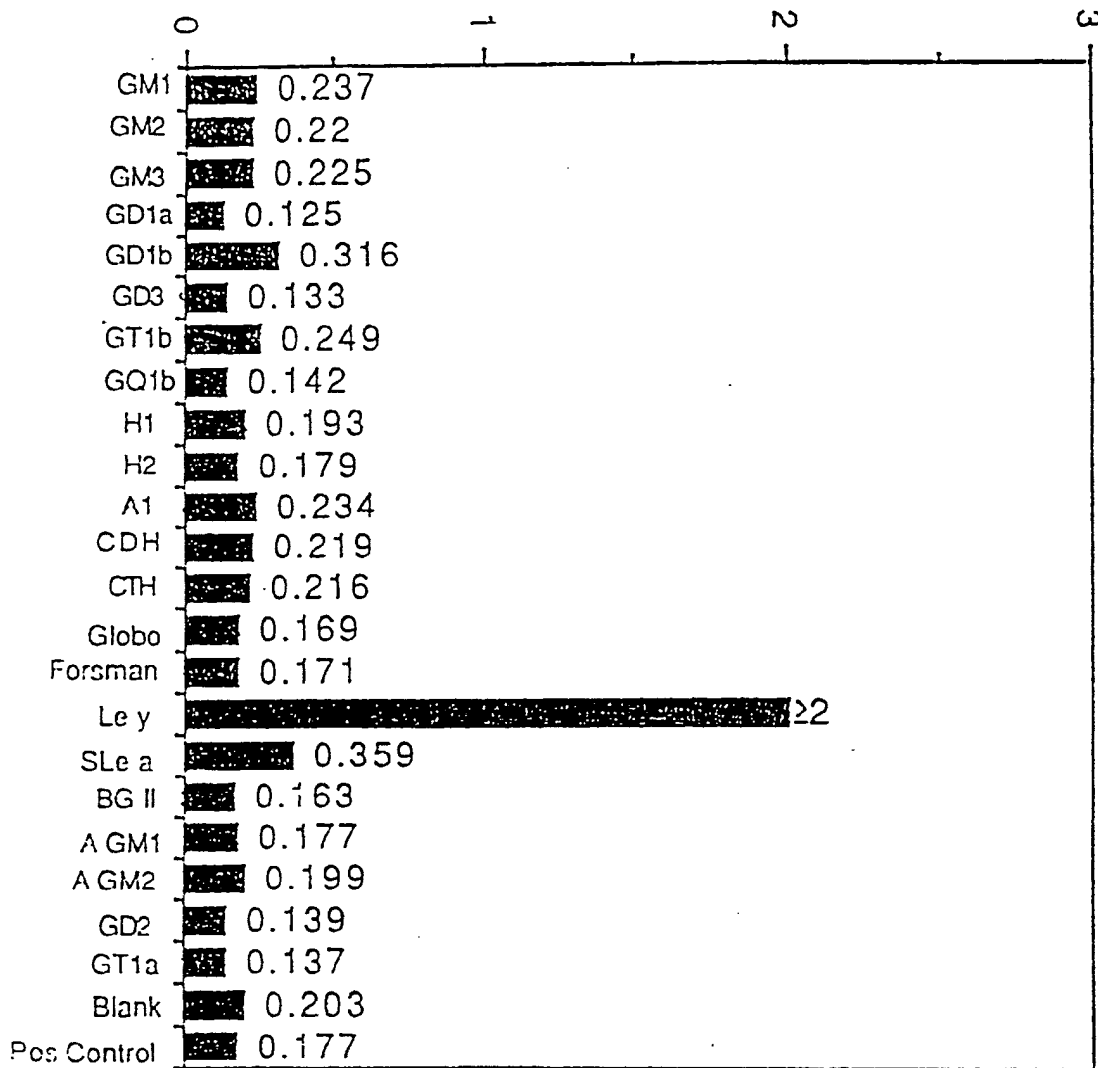


FIGURE 11

12/27

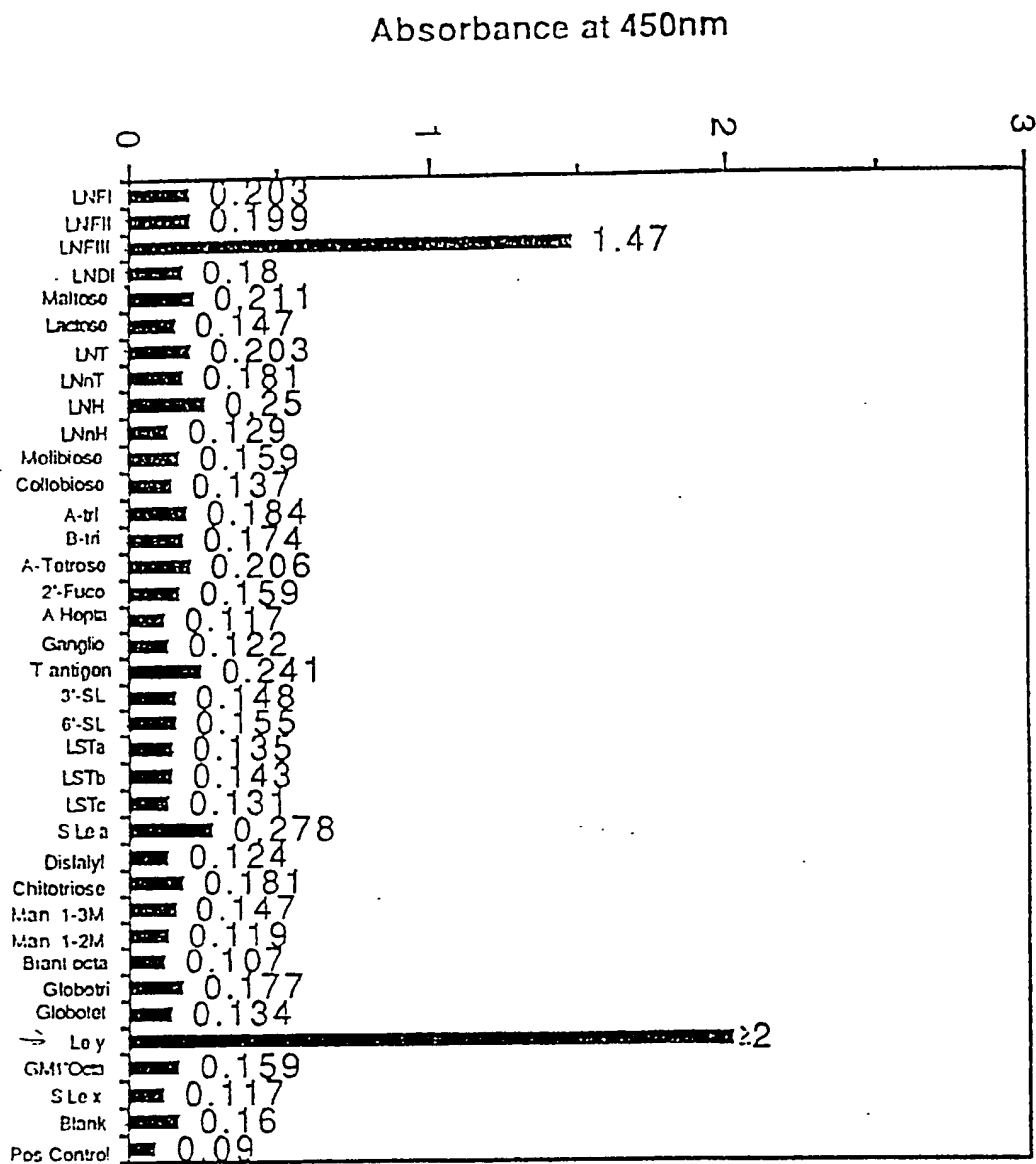


FIGURE 12

HELLSTROM ET AL.
13/27

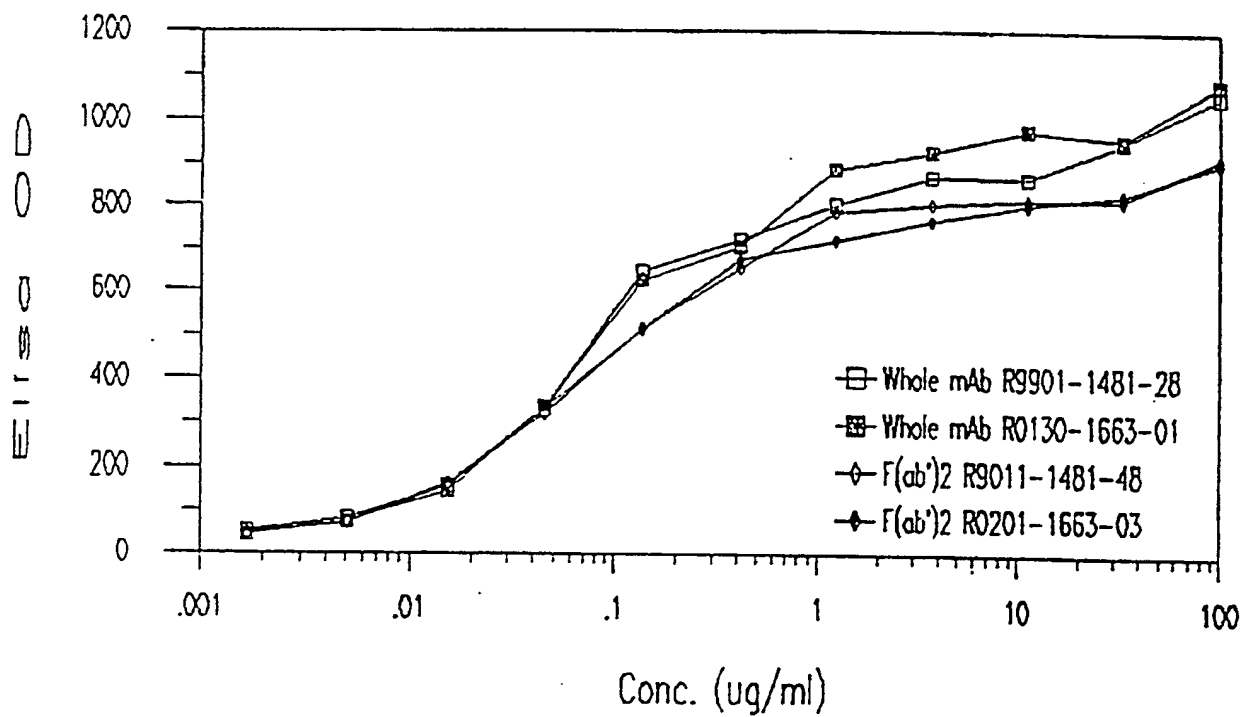


FIGURE 13

14/27

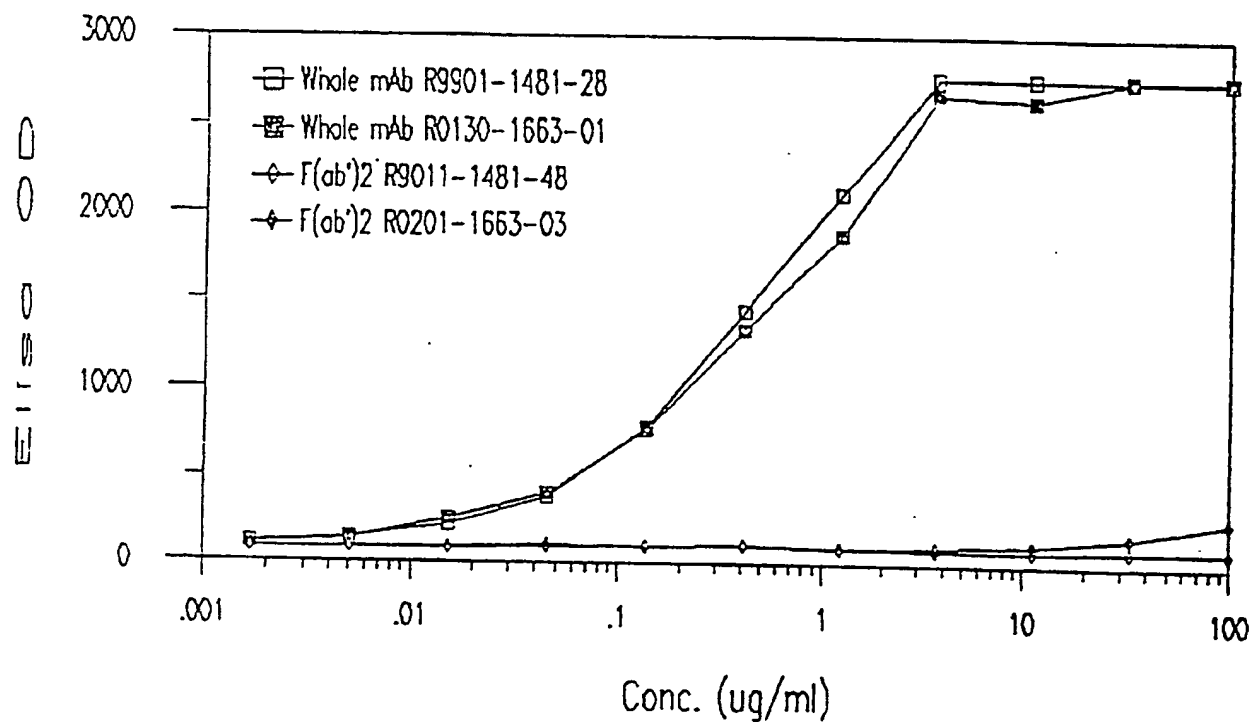


FIGURE 14

15/27

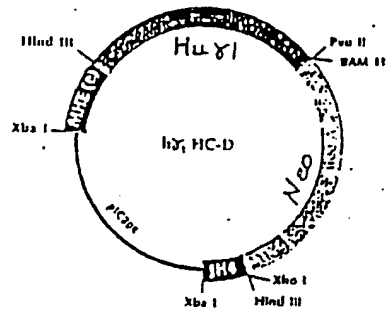


FIGURE 15

16/27

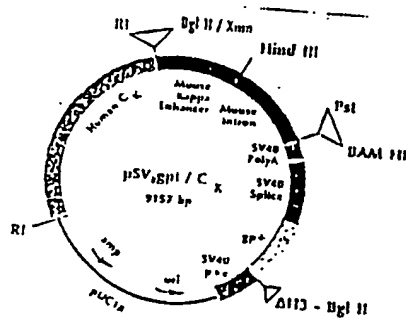


FIGURE 16

Characterization of Chimeric Antibody Specificity and Affinity by a Competition Binding Assay

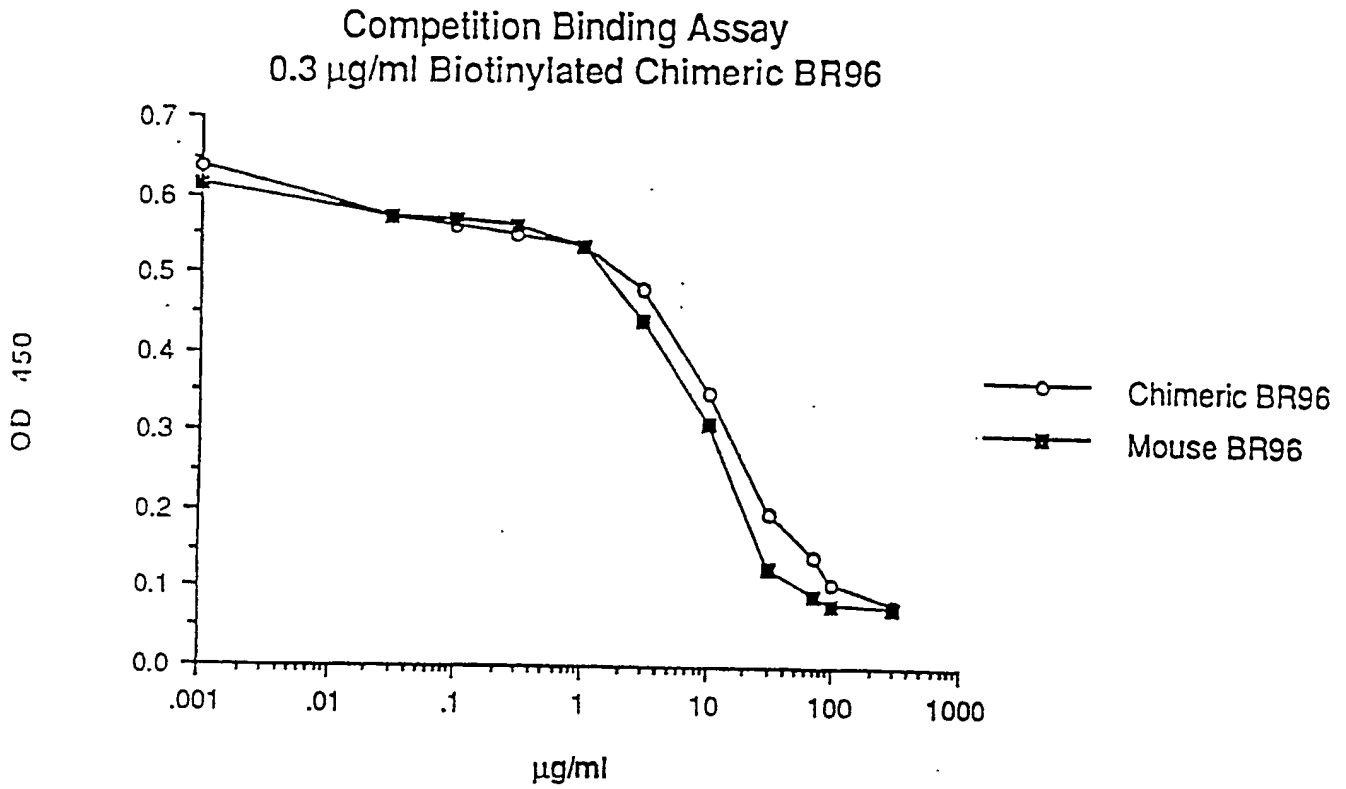


FIGURE 17

18/27

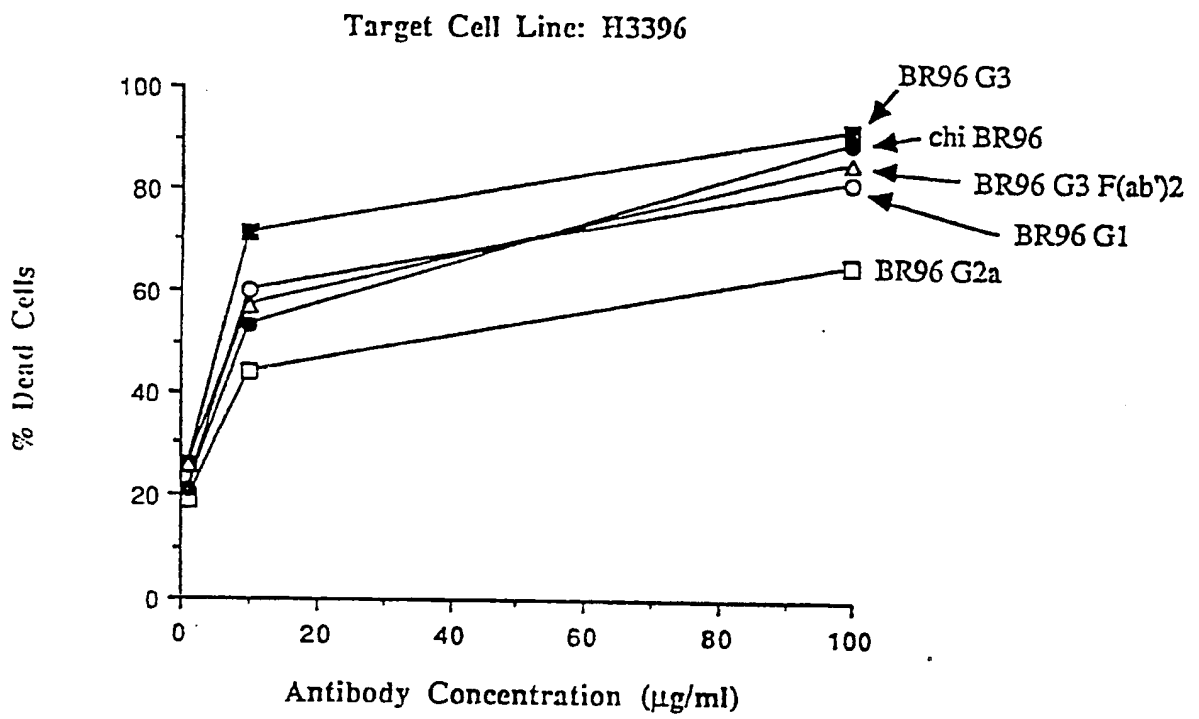


FIGURE 18

19/27

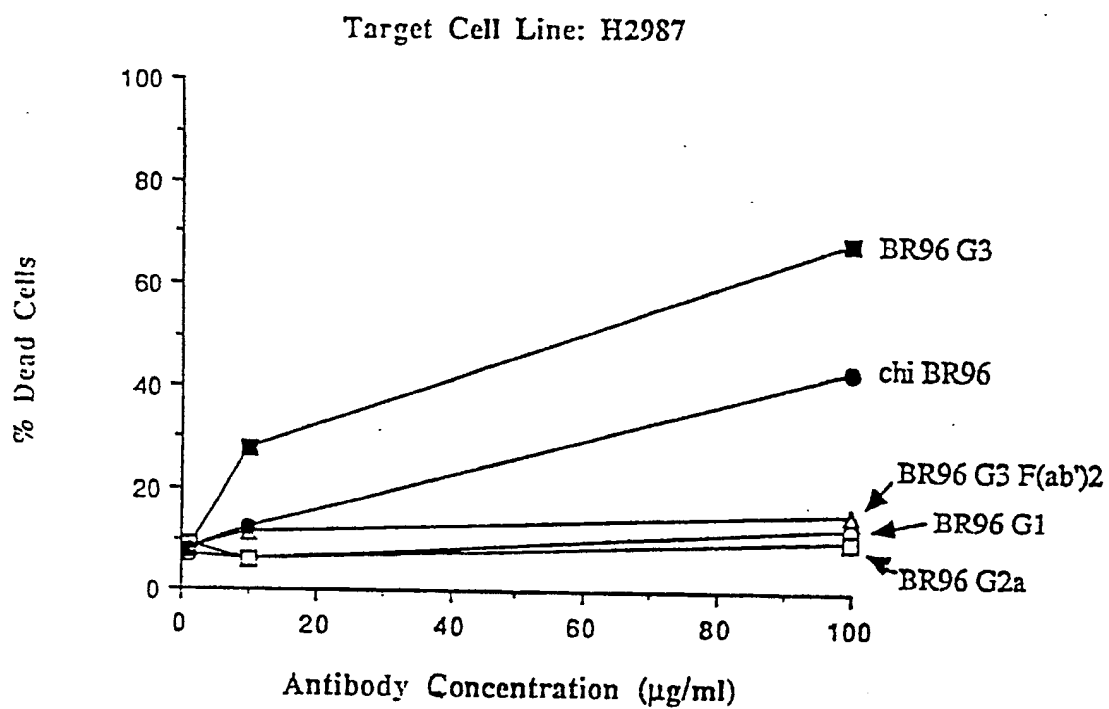


FIGURE 19

20/27

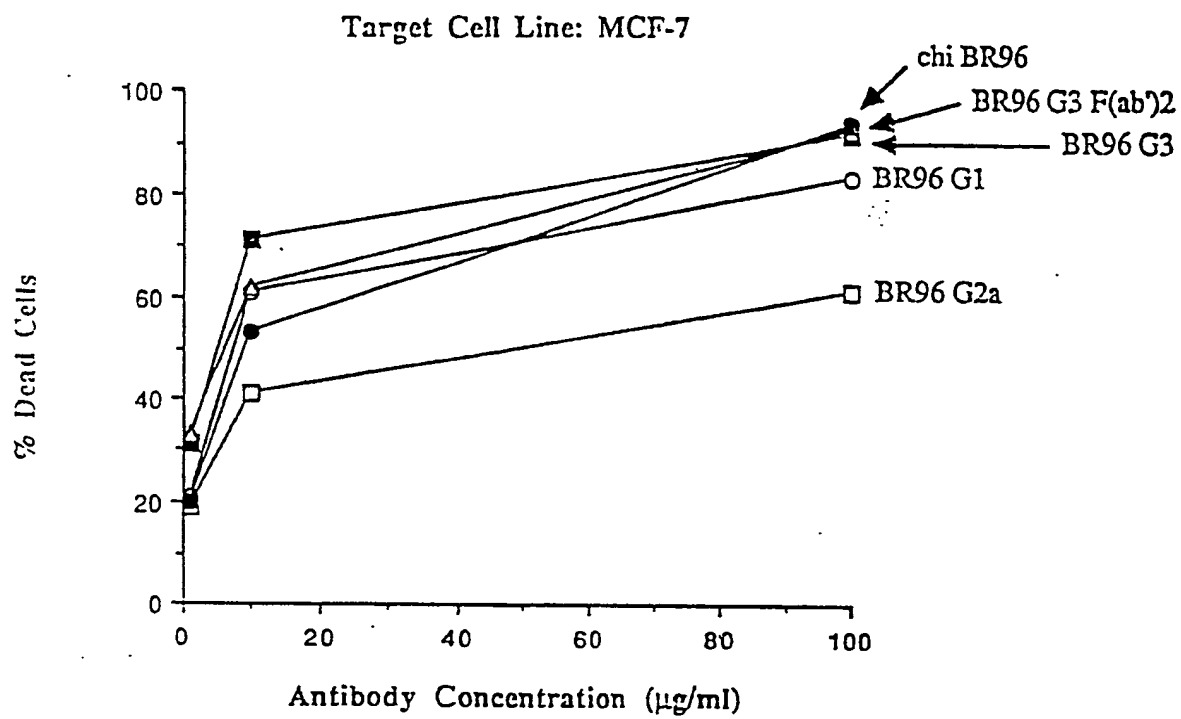


FIGURE 20

21/27

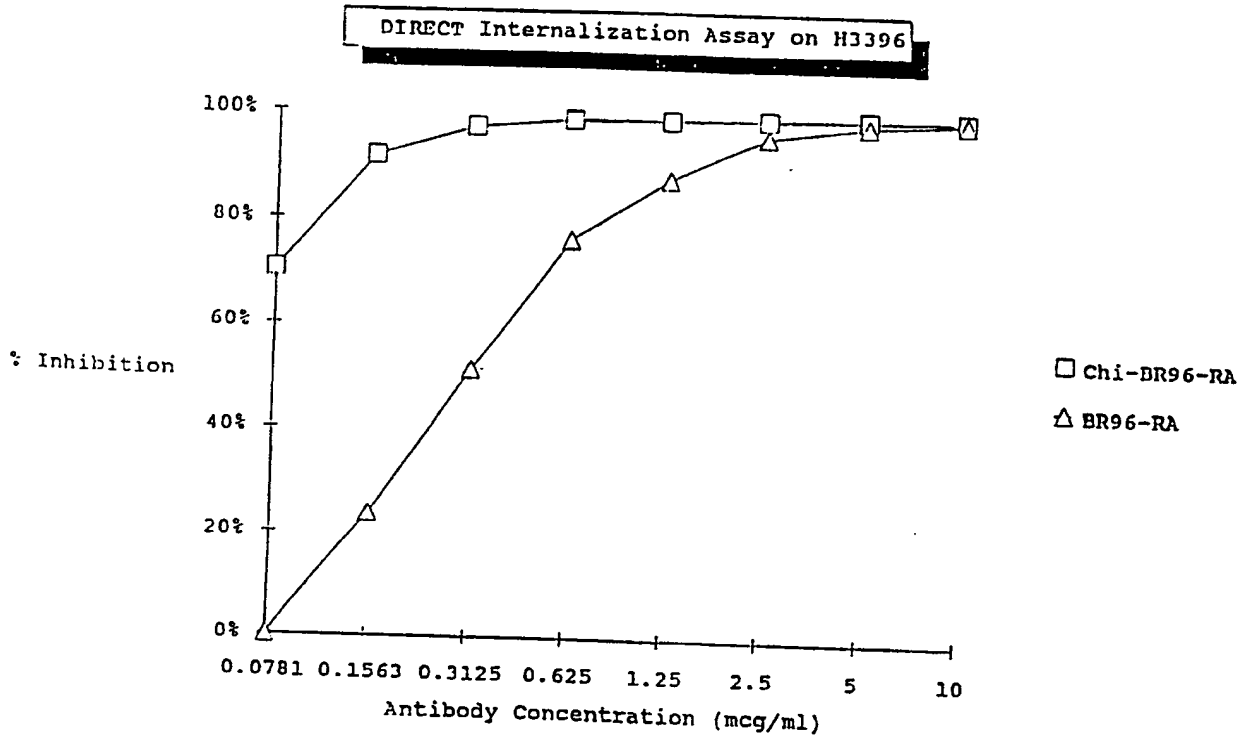


FIGURE 21

22/27

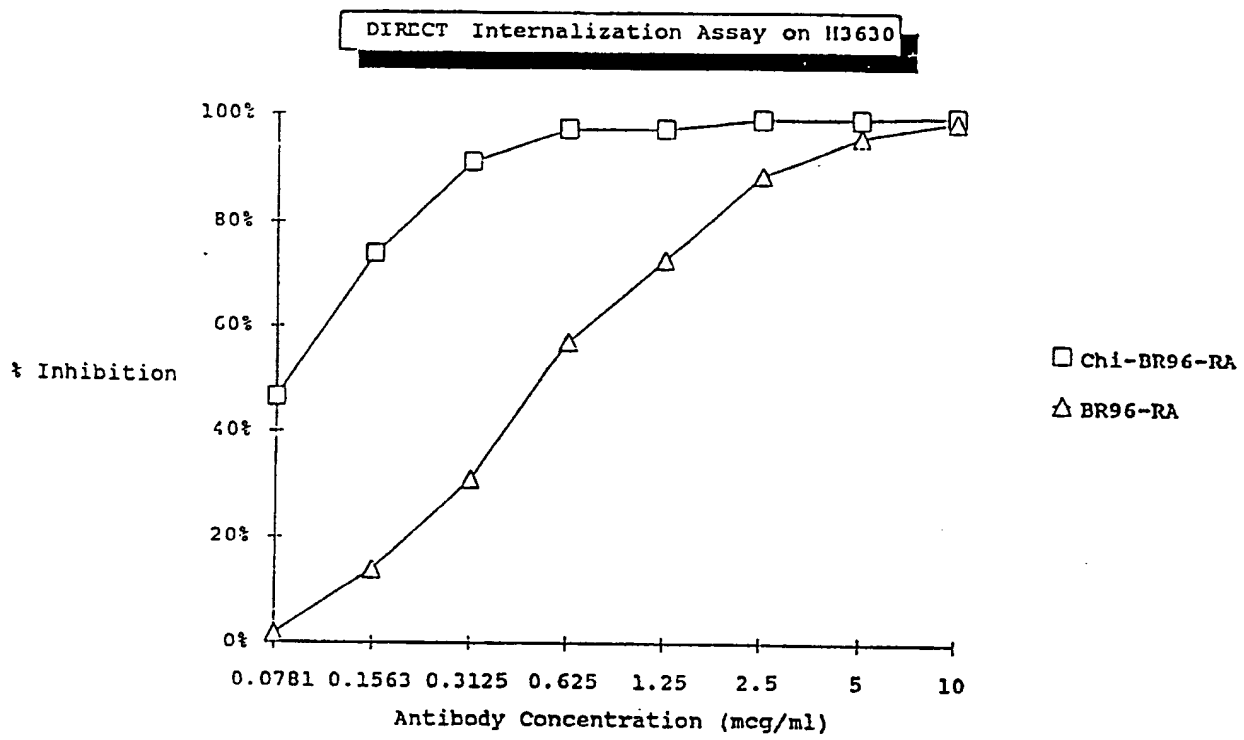
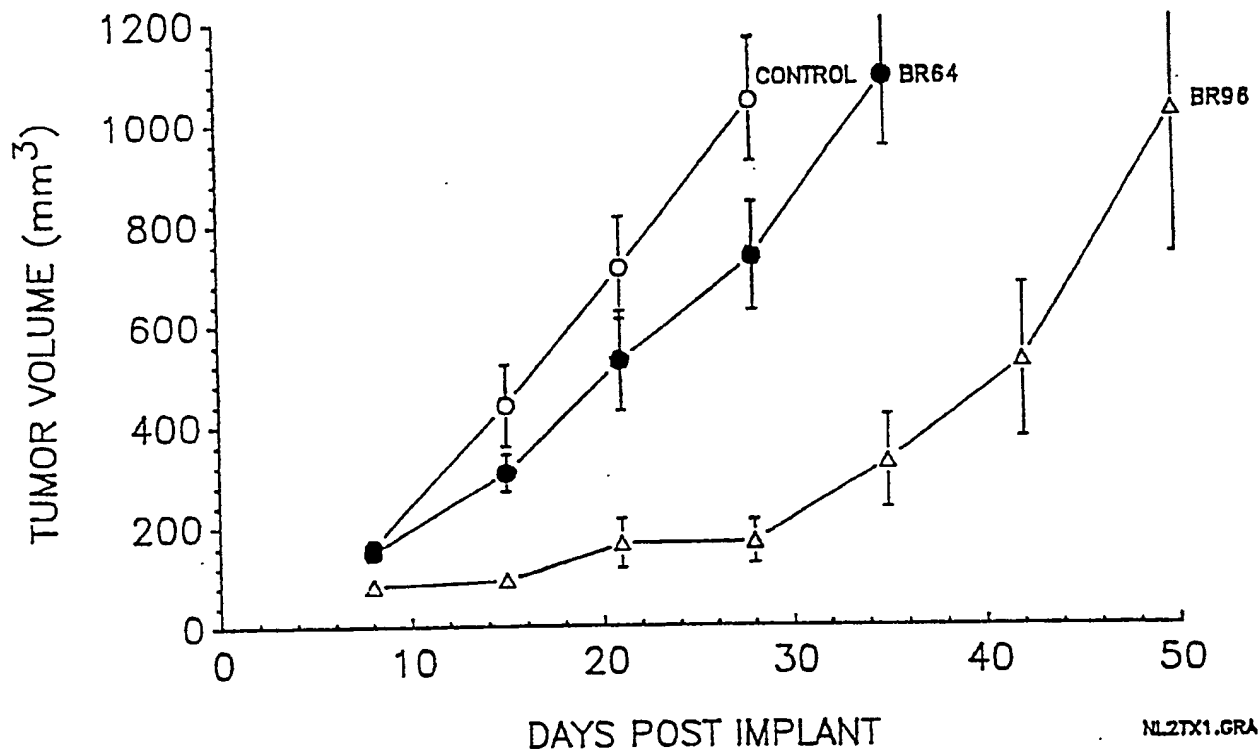


FIGURE 22

EFFECTS OF UNMODIFIED MABs ON H2987



NL2TX1.GRA

FIGURE 23

24/27

ABSENCE OF TUMOR AT END OF TREATMENT 10 ANIMALS PER GROUP

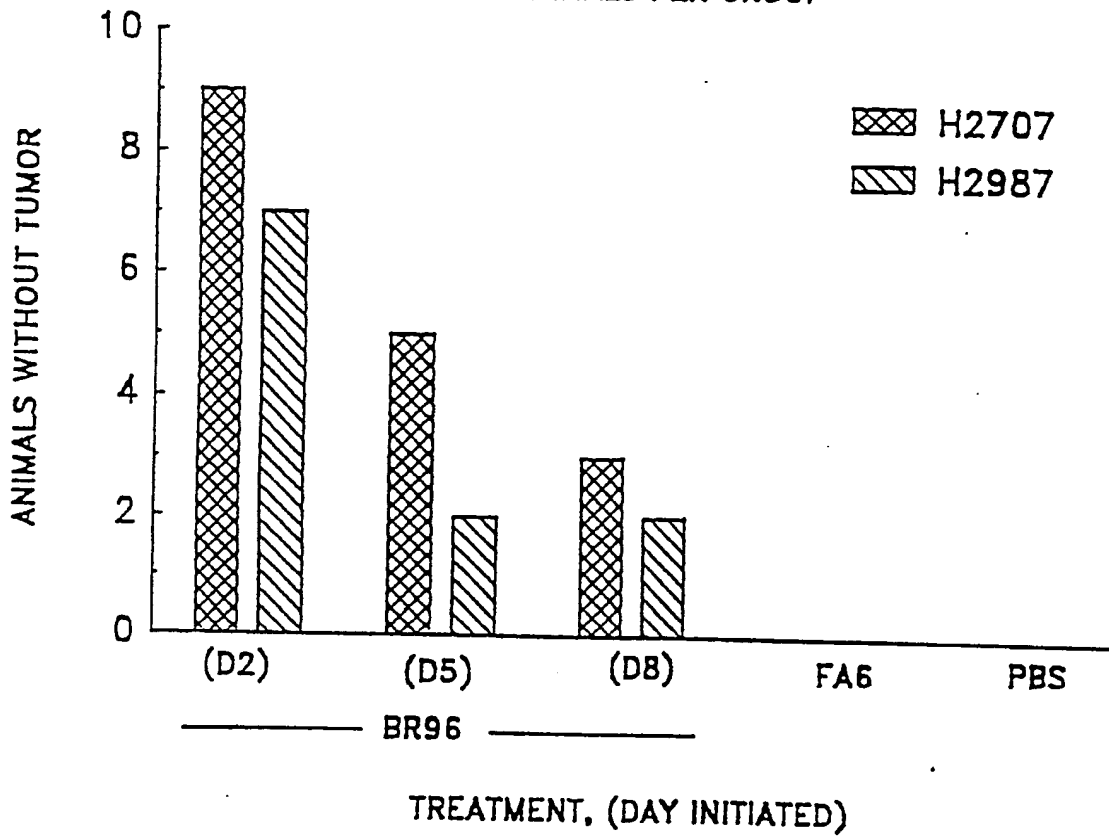


FIGURE 24

DOSE EFFECTS OF BR96 IgG₃ On H2707

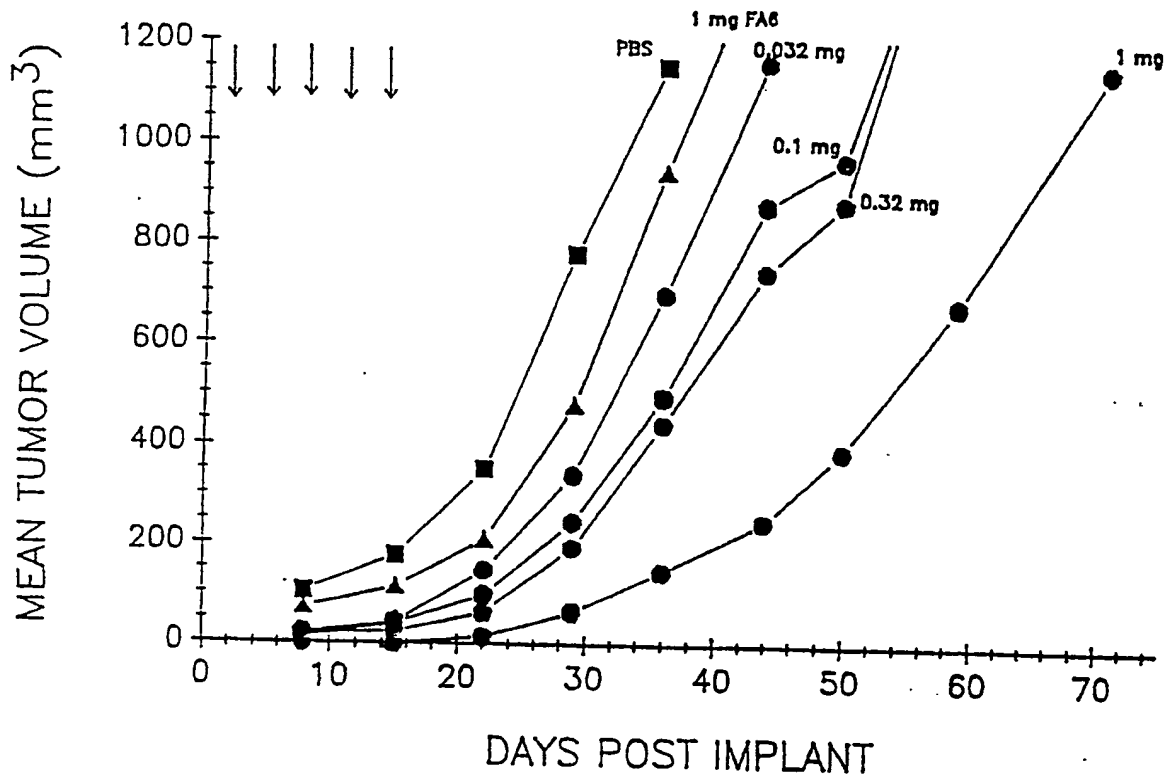


FIGURE 25

26/27

EFFECTS OF F(ab')₂ AND CHIMERIC BR96 ON H2707

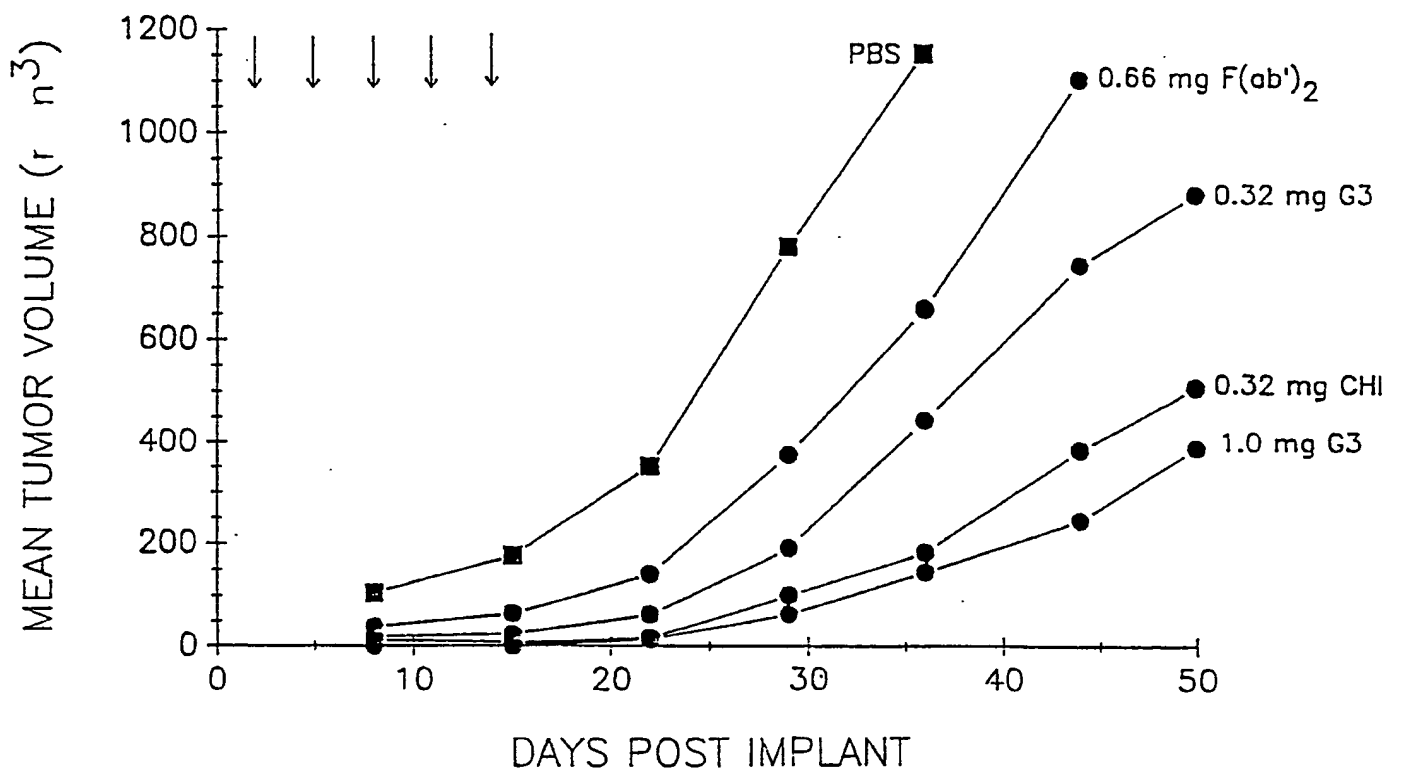


FIGURE 26

27/27

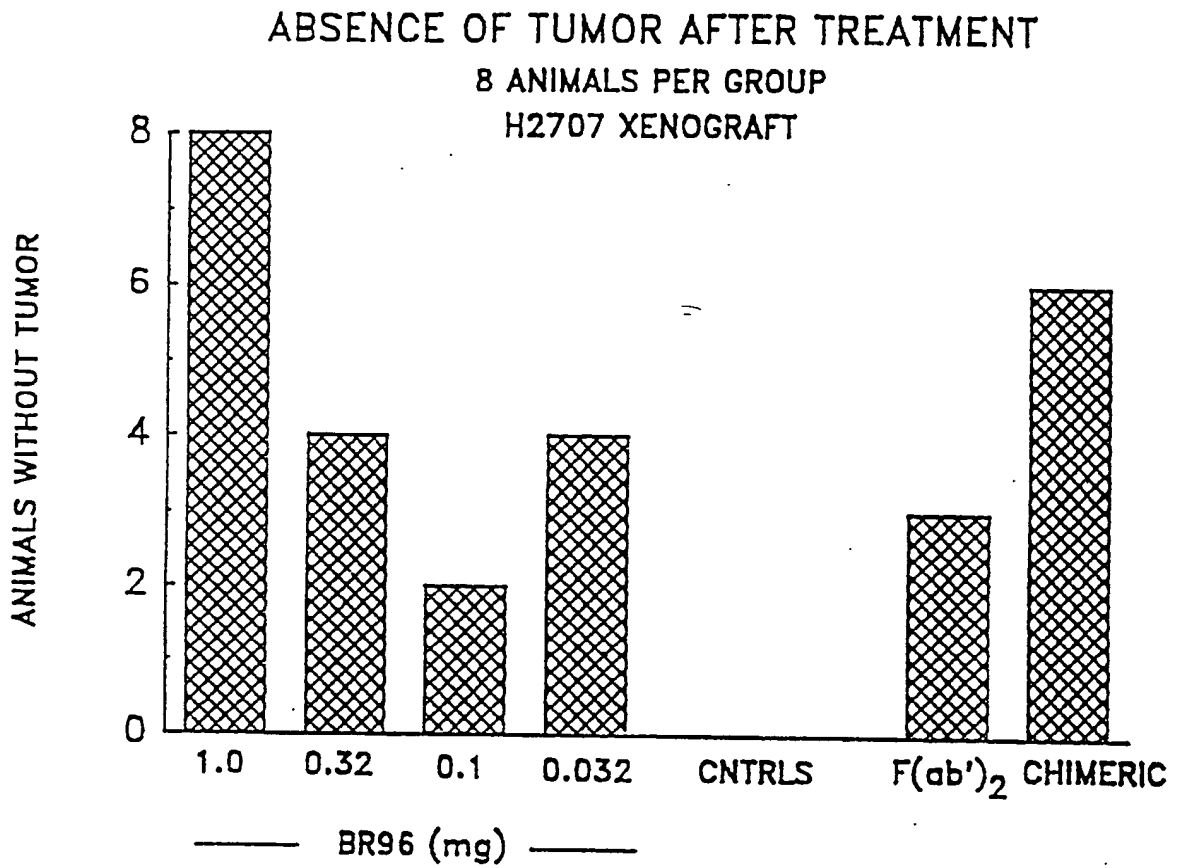


FIGURE 27

INTERNATIONAL SEARCH REPORT

International Application No PCT/US90/03712

I. CLASSIFICATION OF SUBJECT MATTER (if several classification symbols apply, indicate all) ³
 According to International Patent Classification (IPC) or to both National Classification and IPC
 IPC(5): C07K 15/28; C12N 5/12, 9/96; G01N 33/535; A61K 43/00, 39/00
 US. CL.: 530/387,388,389; 435/240.27,188,7; 424/1.1,85.8,85.91

II. FIELDS SEARCHED

Classification System ¹	Minimum Documentation Searched ⁴
U.S.	530/387,388,389; 424/1.1,85.8,85.91; 435/240.27,188,7.

Documentation Searched other than Minimum Documentation
to the Extent that such Documents are Included in the Fields Searched ⁵

DATABASES: STNINTERNATIONAL ONLINE (FILE CA, 1967-1990; FILE BIOSIS, 1969-1990) DIALOG ONLINE (FILE BIOSIS; FILE MEDLINE; FILE CANCERLIT) AUTOMATED PATENT SYSTEM (FILE US PAT. 1971-1990)

III. DOCUMENTS CONSIDERED TO BE RELEVANT ¹⁴

Category ⁶	Citation of Document, ¹⁶ with indication, where appropriate, of the relevant passages ¹⁷	Relevant to Claim No. ¹⁸
X Y	Bioscience Reports, Volume 3 issued 1983, A. Brown et al., "A monoclonal antibody against human colonic adenoma recognizes difucosylated Type-2-blood-group chains", pages 163-170, see page 163.	1-4,15,16 5-14,17-31
X Y	Cancer Research, volume 46, issued November 1986, Y.S. Kim et al. "Expression of Le ^y and extended Le ^y blood group-related antigens in human malignant, premalignant and nonmalignant colonic tissues", pages 5985-5992, see page 5985.	1-4,15,16 5-14,17-31
X Y	Cancer Research, volume 46, issued May 1986, K.Abe et al. "Differential expression of difucosyl type 2 chain (Le ^y) defined by monoclonal antibody AH6 in different locations of colonic epithelia, various histological types of colonic polyps and adenocarcinomas", pages 2639-2644, see page 2639.	1-4,15,16 5-14,17-31

- ¹⁵ Special categories of cited documents:
- "A" document defining the general state of the art which is not considered to be of particular relevance
 - "E" earlier document but published on or after the international filing date
 - "L" document which may throw doubts on priority claim(s) or which is cited to establish the publication date of another citation or other special reason (as specified)
 - "O" document referring to an oral disclosure, use, exhibition or other means
 - "P" document published prior to the international filing date but later than the priority date claimed
 - "T" later document published after the international filing date or priority date and not in conflict with the application but cited to understand the principle or theory underlying the invention
 - "X" document of particular relevance; the claimed invention cannot be considered novel or cannot be considered to involve an inventive step
 - "Y" document of particular relevance; the claimed invention cannot be considered to involve an inventive step when the document is combined with one or more other such documents, such combination being obvious to a person skilled in the art.
 - "&" document member of the same patent family

IV. CERTIFICATION

Date of the Actual Completion of the International Search ¹	Date of Mailing of this International Search Report ²
12 September 1990	9 NOV 1990
International Searching Authority ¹	Signature of Authorized Officer ²⁰
ISA/US	<i>Paula Hutze</i> Paula Hutze

III. DOCUMENTS CONSIDERED TO BE RELEVANT (CONTINUED FROM THE SECOND SHEET)		
Category *	Citation of Document, ¹⁶ with indication, where appropriate, of the relevant passages ¹⁷	Relevant to Claim No ¹⁸
Y	Monoclonal Antibodies '84: Biological and Clinical Applications, published 1985, P.E. Thorpe, "Antibody Carriers of Cytotoxic agents in Cancer Therapy: a Review", see pages 475-506.	9-11,18-20,22,26,30,31
Y	Goding "Monoclonal Antibodies: Principles and Practice" published 1983, see pages 118-125.	12
Y	WO, A, 89/05309 (Kohler et al.) 15 June 1989, see entire document.	29
Y	Science, Vol. 229, issued 05 July 1985, M. Brennan et al. "Preparation of bispecific antibodies by chemical recombination of monoclonal immunoglobulin G ₁ fragments, pages 81-83, see especially page 83.	13,14
Y	Journal of Radiation Oncol. Biol. Phys., Vol. 13, No. 10, issued October 1987, L. Brady et al., "Therapeutic and diagnostic uses of modified monoclonal antibodies, pages 1535-1544, see entire document.	21-29
Y	Science, Vol. 229, issued 20 September 1985, S. Morrison, "Transfectomas Provide Novel Chimeric antibodies, pages 1202-1207, see entire document.	5-11,17-19

FURTHER INFORMATION CONTINUED FROM THE SECOND SHEET

X
Y

Immunogenetics, volume 17, issued 1983, K.O. Lloyd et al. "Mouse monoclonal antibody F3 recognizes the difucosyl type-2 blood group structure", pages 537-541, see pages 537-538.

1-4,15,16
5-14,17-31

X
Y

International Journal of Cancer, volume 41, issued 1988, J. Bara et al. "Ectopic expression of the Y(Le^x) antigen defined by monoclonal antibody 12-4LE in distal colonic adenocarcinomas", pages 683-689, see page 683.

1-4,15,16
5-14,17-31

V. OBSERVATIONS WHERE CERTAIN CLAIMS WERE FOUND UNSEARCHABLE¹

This international search report has not been established in respect of certain claims under Article 17(2) (a) for the following reasons:

1. Claim numbers _____, because they relate to subject matter not required to be searched by this Authority, namely:
2. Claim numbers _____, because they relate to parts of the international application that do not comply with the prescribed requirements to such an extent that no meaningful international search can be carried out¹, specifically:
3. Claim numbers _____, because they are dependent claims not drafted in accordance with the second and third sentences of PCT Rule 6.4(a).

VI. OBSERVATIONS WHERE UNITY OF INVENTION IS LACKING²

This International Searching Authority found multiple inventions in this international application as follows: Group I, claims 1-4, 12, 15, 16, 21/3 and 24/3 to antibodies, fragments, hybridomas, pharmaceutical compositions, method of treatment; Group II claims 5,6-8,11, 17,20/7,21/7,24/7 to recombinant protein, chimeric antibody, hybridoma, pharmaceutical compositions; Group III, claims 9,10,23 to protein conjugate, pharmaceutical composition; Group IV, claims 13, 14 to bispecific SEE ATTACHMENT

1. As all required additional search fees were timely paid by the applicant, this international search report covers all searchable claims of the international application.
2. As only some of the required additional search fees were timely paid by the applicant, this international search report covers only those claims of the international application for which fees were paid, specifically claims:
3. No required additional search fees were timely paid by the applicant. Consequently, this international search report is restricted to the invention first mentioned in the claims; it is covered by claim numbers:
4. As all searchable claims could be searched without effort justifying an additional fee, the International Searching Authority did not invite payment of any additional fee.

Remark on Protest

- The additional search fees were accompanied by applicant's protest.
- No protest accompanied the payment of additional search fees.

Attachment to PCT/ISA/210
PCT/US90/03712

VI. OBSERVATIONS WHERE UNITY OF INVENTION IS LACKING.
CONTINUATION

antibody; Group V, claims 18, 19, 20/3, 22 to antibody
conjugate, pharmaceutical composition; Group VI, claims 25-
28, 30, 31 to diagnostic methods, kits; Group VII, claim 29 to
anti-idiotypic antibody.

**This Page is Inserted by IFW Indexing and Scanning
Operations and is not part of the Official Record**

BEST AVAILABLE IMAGES

Defective images within this document are accurate representations of the original documents submitted by the applicant.

Defects in the images include but are not limited to the items checked:

- BLACK BORDERS
- IMAGE CUT OFF AT TOP, BOTTOM OR SIDES
- FADED TEXT OR DRAWING
- BLURRED OR ILLEGIBLE TEXT OR DRAWING
- SKEWED/SLANTED IMAGES
- COLOR OR BLACK AND WHITE PHOTOGRAPHS
- GRAY SCALE DOCUMENTS
- LINES OR MARKS ON ORIGINAL DOCUMENT
- REFERENCE(S) OR EXHIBIT(S) SUBMITTED ARE POOR QUALITY
- OTHER: _____

IMAGES ARE BEST AVAILABLE COPY.

As rescanning these documents will not correct the image problems checked, please do not report these problems to the IFW Image Problem Mailbox.